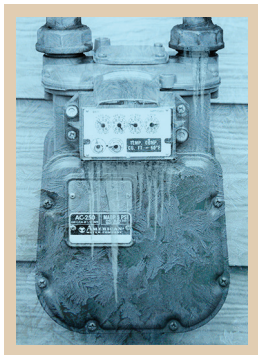


# Protect your meters from harsh winter weather

As the winter season begins and snow starts to fall, Montana-Dakota encourages customers to inspect their natural gas meters on a regular basis to make sure snow and ice have not built up on the meter. Customers are encouraged to carefully clear the snow and ice away from the meter set for safety.



## Why is it important to keep your meter clear of snow and ice?

- Accumulated snow places stress on your meter piping. Damage to the piping can cause a gas leak.
- If there is an emergency, emergency response crews need clear access to your meter.
- Excessive snow cover may result in abnormal pressure, affect appliance operation and interrupt your service.

## Did you know snow and ice can damage gas meters and pipes?

Meters are designed to withstand winter weather conditions, but heavy or hard-packed snow and ice can cause damage. To avoid problems follow some basic meter protection tips:

- Keep your meter area and path to the meter clear of snow and ice.
- Use a broom to keep the snow cleared around and on top of the meter. Do not use a snow blower or shovel near the meter.
- NEVER kick or hit a meter to break away built-up snow or ice.
- Remove icicles from overhead eaves and gutters to prevent dripping water on the meter.

If you believe damage has occurred around the meter set, please call Montana-Dakota at 1-800-638-3278 so the problem can be repaired.

# Snow removal safety

Montana-Dakota urges homeowners and contractors to be careful when removing snow and follow these safety steps:

- Avoid pad-mounted transformers, meters, regulators and other types of equipment necessary for continuous electric and natural gas service. Damage to energized facilities can be dangerous and even fatal. The loss of services from a single accident can affect hundreds of homes and businesses.
- Be careful when piling snow beneath electric lines where children might reach them. Just a quick look up is all it takes to make sure it is safe.

If you are removing snow in Montana-Dakota's service area, call 1-800-638-3278 if you are unsure of the location of energy delivery facilities.

## **Montana-Dakota urges homeowners and contractors to be careful when operating snow removal equipment.**

Anyone operating snow removal equipment needs to be aware of objects buried under the snow, which can include natural gas meters and risers.

Accumulations of snow and ice can cause the regulator and meter to malfunction and result in a hazardous situation. A buried regulator may become clogged, affecting the supply of gas to the appliances. When melting occurs and the snow becomes wet and heavy, it can put pressure on the meter setting and cause strain on the associated piping. In extreme cases, the possibility exists that the piping could break.

If you believe damage has occurred around the meter set, please call Montana-Dakota at 1-800-638-3278 so the problem can be repaired.



A Division of MDU Resources Group, Inc.

*In the Community to Serve®*



**Know what's below.  
Call before you dig.**