



Montana-Dakota Utilities Co.

A Subsidiary of MDU Resources Group, Inc.

400 N 4th Street
Bismarck, ND 58501

State of Wyoming Electric Rate Schedule

W.P.S.C. Tariff No. 1
Original Sheet No. 90

TABLE OF CONTENTS CONDITIONS OF SERVICE Rate 100

Page 1 of 54

<u>Title</u>	<u>Page No.</u>
I. Purpose	6
II. Definitions	
Applicant	6
Commission and Commissioner	6
Company	6
Company's Operating Convenience	6
Customer	6
Delivery Point	7
Rate	7
III. Customer Obligations	
1. Application For Service	7
2. Access to Customer's Premises	7
3. Company Property	8
4. Relocated Facilities	8
5. Notification of Unsafe Conditions	8
6. Termination of Service	8
7. Reporting Requirements	8
IV. Liability	
1. Continuity of Service	8-9
2. Customer's Equipment	9
3. Company Equipment and Use of Service	9
4. Indemnification	9
5. Force Majeure	9-11
V. General Terms and Conditions	
1. Agreement	11
2. Rate Options	11

Date Filed: January 4, 2019

Effective Date: Service rendered on and
after January 1, 2019

Issued By: Tamie A. Aberle
Director – Regulatory Affairs

Docket No.: 20004-128-EA-18



Montana-Dakota Utilities Co.

A Subsidiary of MDU Resources Group, Inc.

400 N 4th Street
Bismarck, ND 58501

State of Wyoming Electric Rate Schedule

W.P.S.C. Tariff No. 1
Original Sheet No. 91

TABLE OF CONTENTS CONDITIONS OF SERVICE Rate 100

Page 2 of 54

	<u>Page No.</u>
3. Electric Service Availability	11-13
4. Customer Deposits	13-16
5. Metering and Measurement	17-18
6. Billing Adjustments	18
7. Late Payment	19
8. Returned Check Charge	19
9. Tax Clause	19-20
10. Utility Customer Services	20
11. Utility Services Performed After Normal Business Hours	21
12. Notice to Discontinue Electric Service	21
13. Reconnection Fee for Seasonal or Temporary Customer	21
14. Discontinuance of Service for Nonpayment of Bills	21-25
15. Prohibitions Against Service Discontinuation	25-26
16. Discontinuance of Service for Causes Other Than Nonpayment of Bills	27
17. Bill Discount for Qualifying Employees	28
18. Refusal to Serve New Customers or Expand Existing Service	28
VI. Miscellaneous Charges	29-30
VII. Electric Service Rules	30
Section 100 - GENERAL	
101 Electrical Codes and Ordinances	30
102 Wiring Adequacy	30
103 Inspection of Wiring	31

Date Filed: January 4, 2019

Effective Date: Service rendered on and
after January 1, 2019

Issued By: Tamie A. Aberle
Director – Regulatory Affairs

Docket No.: 20004-128-EA-18



Montana-Dakota Utilities Co.

A Subsidiary of MDU Resources Group, Inc.

400 N 4th Street
Bismarck, ND 58501

State of Wyoming Electric Rate Schedule

W.P.S.C. Tariff No. 1
Original Sheet No. 92

TABLE OF CONTENTS CONDITIONS OF SERVICE Rate 100

Page 3 of 54

		<u>Page No.</u>	
	104	Permits, Certificates, Affidavits	31
	105	Consultation with the Company	31
	106	Unauthorized Use of Service	31-32
	107	Unauthorized Attachments to Poles	32-33
Section	200	- USE OF ELECTRIC SERVICE	
	201	Rate Schedules	33
	202	Resale of Energy	33
	203	Temporary Service	33
	204	Standby Service	33-34
	205	Parallel Service	34
	206	Transformer Installations on Customer's Premises	34-35
Section	300	- ELECTRIC SERVICE AVAILABLE	
	301	Frequency	35
	302	Secondary Voltages	35-36
	303	Primary Voltages	36
Section	400	- SECONDARY VOLTAGE SERVICE (Under 600 Volts)	
	401	Secondary Voltage Service Connections	36
	402	Service Connections and Disconnections	36
	403	Number of Service Drops	36
	404	Services in Raceways	37
	405	Service Entrance Requirements	37
	406	Identification of Conductors	37

Date Filed: January 4, 2019

Effective Date: Service rendered on and after January 1, 2019

Issued By: Tamie A. Aberle
Director – Regulatory Affairs

Docket No.: 20004-128-EA-18



Montana-Dakota Utilities Co.

A Subsidiary of MDU Resources Group, Inc.

400 N 4th Street
Bismarck, ND 58501

State of Wyoming Electric Rate Schedule

W.P.S.C. Tariff No. 1
Original Sheet No. 93

TABLE OF CONTENTS CONDITIONS OF SERVICE Rate 100

Page 4 of 54

		<u>Page No.</u>	
	407	Overhead Service Drops	37-39
	408	Secondary Voltage Underground Service	39-40
	409	Mobile Home Service	40
Section	500	- PRIMARY VOLTAGE SERVICE (2400 Volts or More)	
	501	General	40
	502	Service Entrance Equipment	40
	503	Overcurrent Protection	41
	504	Disconnecting Means	41
	505	Load Balance	41
Section	600	- METERING	
	601	General	41-42
	602	Meter Installations	42-44
	603	Meter-Switch-Fuse Wiring Sequence	44
	604	Meter Locations	44
	605	Indoor Metering	45
	606	Wiring Diagrams	45
	607	Labeling	45
	608	Seals	45
Section	700	- UTILIZATION EQUIPMENT	
	701	Interfering Loads	45-46
	702	Voltage Flicker and Harmonics	46
	703	Power Factor	46
	704	X-Ray Equipment	46

Date Filed: January 4, 2019

Effective Date: Service rendered on and
after January 1, 2019

Issued By: Tamie A. Aberle
Director – Regulatory Affairs

Docket No.: 20004-128-EA-18



Montana-Dakota Utilities Co.

A Subsidiary of MDU Resources Group, Inc.

400 N 4th Street
Bismarck, ND 58501

State of Wyoming Electric Rate Schedule

W.P.S.C. Tariff No. 1
Original Sheet No. 94

TABLE OF CONTENTS CONDITIONS OF SERVICE Rate 100

Page 5 of 54

	<u>Page No.</u>
705 Electric Welders	46
706 Electric Motors	46-47
707 Flashing Display Signs	47
708 Fluorescent and Gaseous Tube Lighting	48
709 Electric Heat Equipment	48
710 Computers and Electronic Equipment	48
711 Carrier Equipment	48

ILLUSTRATIONS

Figure 1 - Typical Service Attachment	49
Figure 2 - Transformer Rated Metering, Padmount Transformer	50
Figure 3 - Transformer Rated Metering, Overhead or Underground Service	51
Figure 4 - Polyphase Self Contained Meter Connections	52
Figure 5 - Typical Padmount Equipment Installation	53
Figure 6 - Typical Transition Cabinet Installation	54

Date Filed: January 4, 2019

Effective Date: Service rendered on and after January 1, 2019

Issued By: Tamie A. Aberle
Director – Regulatory Affairs

Docket No.: 20004-128-EA-18



Montana-Dakota Utilities Co.

A Subsidiary of MDU Resources Group, Inc.

400 N 4th Street
Bismarck, ND 58501

State of Wyoming Electric Rate Schedule

W.P.S.C. Tariff No. 1
Original Sheet No. 95

CONDITIONS OF SERVICE Rate 100

Page 6 of 54

I. **PURPOSE:**

These rules are intended to define good practice which can normally be expected, but are not intended to exclude other generally accepted standards and practices not covered herein. They are intended to ensure adequate service to the public and protect the Company from unreasonable demands.

The Company undertakes to furnish service subject to the rules and regulations of the Regulatory Commissions as supplemented by these general provisions, as now in effect or as may hereafter be lawfully established, and in accepting service from the Company, each customer agrees to comply with and be bound by said rules and regulations and the applicable rate schedules.

II. **DEFINITIONS:**

The following terms used in this tariff shall have the following meanings, unless otherwise indicated:

APPLICANT - A customer requesting Company to provide service.

COMMISSION AND COMMISSIONER - The Public Service Commission of Wyoming or a member thereof respectively.

COMPANY - Montana-Dakota Utilities Co.

COMPANY'S OPERATING CONVENIENCE - The utilization, under certain circumstances, of facilities or practices not ordinarily employed which contribute to the overall efficiency of Company's operations. This does not refer to the customer's convenience nor to the use of facilities or adoption of practices required to comply with applicable laws, ordinances, rules or regulations, or similar requirements of public authorities.

CUSTOMER - Any individual, partnership, corporation, firm, other organization or government agency supplied with service by the Company at one location and one point of delivery unless otherwise expressly provided in these rules or in a rate schedule.

Date Filed: January 4, 2019

Effective Date: Service rendered on and
after January 1, 2019

Issued By: Tamie A. Aberle
Director – Regulatory Affairs

Docket No.: 20004-128-EA-18



Montana-Dakota Utilities Co.

A Subsidiary of MDU Resources Group, Inc.

400 N 4th Street
Bismarck, ND 58501

State of Wyoming Electric Rate Schedule

W.P.S.C. Tariff No. 1
Original Sheet No. 96

CONDITIONS OF SERVICE Rate 100

Page 7 of 54

DELIVERY POINT - The point where the Company's facilities join those of the customer.

RATE - Shall mean and include every compensation, charge, fare, toll, rental and classification, or any of them, demanded, observed, charged or collected by the Company for any service, product, or commodity, offered by the Company to the public, and any rules, regulations, practices or contracts affecting any such compensation, charge, fare, toll, rental or classification.

III. CUSTOMER OBLIGATIONS:

1. **APPLICATION FOR SERVICE** - A customer desiring electric service must submit an application to the Company before commencing the use of the Company's service. The Company reserves the right to require a signed application or written contract for service to be furnished. All applications and contracts for service must be made in the legal name of the customer desiring the service. Any customer may be required to make a deposit as required by the Company in accordance with §V.4. The Company may refuse service or discontinue service to a customer who fails or refuses to furnish reasonable information requested by the Company for the establishment of a service account. Any customer who uses electric service shall be subject to the Company's rates, rules, and regulations and shall be responsible for payment of all service used.

Subject to rates, rules, and regulations, the Company will continue to supply electric service until notified by the customer to discontinue the service. The customer will be responsible for payment of all service furnished through the date of discontinuance.

2. **ACCESS TO CUSTOMER'S PREMISES** – Company representatives, when properly identified, shall have access to customer's premises at all reasonable times for the purpose of reading meters, making repairs, making inspections, removing the Company's property, or for any other purpose incidental to the service.

Date Filed: January 4, 2019

Effective Date: Service rendered on and after January 1, 2019

Issued By: Tamie A. Aberle
Director – Regulatory Affairs

Docket No.: 20004-128-EA-18



Montana-Dakota Utilities Co.

A Subsidiary of MDU Resources Group, Inc.

400 N 4th Street
Bismarck, ND 58501

State of Wyoming Electric Rate Schedule

W.P.S.C. Tariff No. 1
Original Sheet No. 97

CONDITIONS OF SERVICE Rate 100

Page 8 of 54

3. COMPANY PROPERTY – The customer shall not disconnect, change connections, make connections or otherwise interfere with Company’s meters or other property or permit same to be done by other than the Company’s authorized employees.
4. RELOCATED FACILITIES – Where Company facilities are located on or adjacent to a customer’s premises and where there is an encroachment(s) to electric facilities caused by the customer; said customer shall be charged for line relocation on the basis of actual costs incurred by the Company including any required easements.
5. NOTIFICATION OF UNSAFE CONDITIONS – The customer shall immediately notify the Company of any unsafe conditions associated with the Company’s electric facilities at the customer’s premises.
6. TERMINATION OF SERVICE - All customers are required to notify the Company, to prevent their liability for service used by succeeding tenants, when vacating their premises. Upon receipt of such notice, the Company will read the meter and further liability for service used on the part of the vacating customer will cease.
7. REPORTING REQUIREMENTS - Customer shall furnish Company all information as may be required or appropriate to comply with reporting requirements of duly constituted authorities having jurisdiction over the matter herein.

IV. LIABILITY:

1. CONTINUITY OF SERVICE – The Company’s electric system is unusually widespread and has many interconnections with sources of power other than its own generating stations and it is subject to exposure by storms and other factors not under its control. The Company employs the latest developments in equipment and methods of operation for the purpose of maintaining adequate service. The Company will use all reasonable care to provide continuous service but does not assume responsibility for a regular and

Date Filed: January 4, 2019

Effective Date: Service rendered on and after January 1, 2019

Issued By: Tamie A. Aberle
Director – Regulatory Affairs

Docket No.: 20004-128-EA-18



Montana-Dakota Utilities Co.

A Subsidiary of MDU Resources Group, Inc.

400 N 4th Street
Bismarck, ND 58501

State of Wyoming Electric Rate Schedule

W.P.S.C. Tariff No. 1
Original Sheet No. 98

CONDITIONS OF SERVICE Rate 100

Page 9 of 54

uninterrupted supply of electric service and will not be liable for any loss, injury, death or damage resulting from or caused by the interruption of the same.

2. CUSTOMER'S EQUIPMENT - Neither by inspection or rejection, nor in any other way does the Company give any warranty, expressed or implied, as to the adequacy, safety or other characteristics of any structures, equipment, lines, appliances or devices owned, installed or maintained by the customer, leased by the customer from third parties or used on the customer's premises. It is the obligation of the customer to consult with the Company regarding available maximum fault current and to provide such protection devices as may be necessary to safeguard the equipment and installation from interruptions, variation in voltage and frequency, single-phase energization of three-phase lines, reversal of phase rotation or other abnormal conditions. (Refer to Paragraph 710)
3. COMPANY EQUIPMENT AND USE OF SERVICE - The Company will not be liable for any loss, injury, death or damage resulting in any way from the supply or use of electricity or from the presence or operation of the Company's structures, equipment, lines, appliances or devices on the customer's premises, except loss, injuries, death, or damages resulting from the negligence of the Company.
4. INDEMNIFICATION - Customer agrees to indemnify and hold Company harmless from any and all injury, death, loss or damage resulting from customer's negligent or wrongful acts under and during the term of service. Company agrees to indemnify and hold customer harmless from any and all injury, death, loss or damage resulting from Company's negligent or wrongful acts under and during the term of service.
5. FORCE MAJEURE - In the event of either party being rendered wholly or in part by force majeure unable to carry out its obligations, then the obligations of the parties hereto, so far as they are affected by such force majeure, shall be suspended during the continuance of

Date Filed: January 4, 2019

Effective Date: Service rendered on and
after January 1, 2019

Issued By: Tamie A. Aberle
Director – Regulatory Affairs

Docket No.: 20004-128-EA-18



Montana-Dakota Utilities Co.

A Subsidiary of MDU Resources Group, Inc.

400 N 4th Street
Bismarck, ND 58501

State of Wyoming Electric Rate Schedule

W.P.S.C. Tariff No. 1
Original Sheet No. 99

CONDITIONS OF SERVICE Rate 100

Page 10 of 54

any inability so caused. Such causes or contingencies affecting the performance by either party, however, shall not relieve it of liability in the event of its concurring negligence or in the event of its failure to use due diligence to remedy the situation and remove the cause in an adequate manner and with all reasonable dispatch, nor shall such causes or contingencies affecting the performance relieve either party from its obligations to make payments of amounts then due hereunder, nor shall such causes or contingencies relieve either party of liability unless such party shall give notice and full particulars of the same in writing or by telephone to the other party as soon as possible after the occurrence relied on.

The term "force majeure" as employed herein shall include, but shall not be limited to, acts of God, strikes, lockouts or other industrial disturbances, failure to perform by any third party, which performance is necessary to the performance by either customer or Company, acts of public enemies or terrorists, wars, blockades, insurrections, riots, epidemics, landslides, lightning, earthquakes, fires, storms, floods, washouts, arrest and restraint of rulers and peoples, civil disturbances, explosions, breakage or accident to machinery or electric lines, animal interference, sudden partial or sudden entire failure of electric transmission or supply, failure to obtain materials and supplies due to governmental regulations, and causes of like or similar kind, whether herein enumerated or not, and not within the control of the party claiming suspension, and which by the exercise of due diligence such party is unable to overcome; provided that the exercise of due diligence shall not require settlement of labor disputes against the better judgment of the party having the dispute.

The term "force majeure" as employed herein shall also include, but shall not be limited to, inability to obtain or acquire, at reasonable cost, grants, servitudes, rights-of-way, permits, licenses, or any other authorizations from third parties or agencies (private or governmental) or inability to obtain or acquire at reasonable cost necessary materials or supplies to construct, maintain, and operate any facilities required

Date Filed: January 4, 2019

Effective Date: Service rendered on and
after January 1, 2019

Issued By: Tamie A. Aberle
Director – Regulatory Affairs

Docket No.: 20004-128-EA-18



Montana-Dakota Utilities Co.

A Subsidiary of MDU Resources Group, Inc.

400 N 4th Street
Bismarck, ND 58501

State of Wyoming Electric Rate Schedule

W.P.S.C. Tariff No. 1
Original Sheet No. 100

CONDITIONS OF SERVICE Rate 100

Page 11 of 54

for the performance of any obligations under this agreement, when any such inability directly or indirectly contributes to or results in either party's inability to perform its obligations.

V. GENERAL TERMS AND CONDITIONS:

1. **AGREEMENT** - Upon request of the Company, customer may be required to enter into an agreement for any service.
2. **RATE OPTIONS** - Where more than one rate schedule is available for the same class of service, the Company will assist the customer in selecting the applicable rate schedule(s). The Company is not required to change a customer from one rate schedule to another more often than once in twelve months unless there is a material change in the customer's load which alters the availability and/or applicability of such rate(s), or unless a change becomes necessary as a result of an order issued by the Commission or a court having jurisdiction. The Company will not be required to make any change in a fixed term contract except as provided therein.
3. **ELECTRIC SERVICE AVAILABILITY** - Residential Electric Service is available to any residential customer for domestic purposes only. All normal sized equipment used for domestic lighting, heating, cooking and power, and used strictly for household purposes, may be supplied through one meter.
 - a. Residential service is defined as service for domestic general household purposes in space occupied as living quarters, designed for occupancy by one family. Typical service would include the following: separately metered units, such as single private residences, single apartments and mobile homes (this is not an all-inclusive list). In addition, auxiliary buildings on the same premises as the living quarters, used for residential purposes, may be served on the residential rate.

Motors and other equipment which interfere with service to neighboring customers, all motors larger than 5 horsepower and

Date Filed: January 4, 2019

Effective Date: Service rendered on and after January 1, 2019

Issued By: Tamie A. Aberle
Director – Regulatory Affairs

Docket No.: 20004-128-EA-18



Montana-Dakota Utilities Co.

A Subsidiary of MDU Resources Group, Inc.

400 N 4th Street
Bismarck, ND 58501

State of Wyoming Electric Rate Schedule

W.P.S.C. Tariff No. 1
Original Sheet No. 101

CONDITIONS OF SERVICE Rate 100

Page 12 of 54

temporary or seasonal loads totaling more than 25 kilowatts (Kw) will not be permitted on the Residential Electric Service Rate without prior Company approval.

Only single phase service is available under the Residential Electric Service Rate.

- b. Three phase service shall be served under the appropriate General Electric Service Rate.
- c. General Electric Service is defined as service provided to nonresidential services, such as a business enterprise in space occupied and operated for nonresidential purposes. Typical service would include stores, offices, shops, restaurants, sorority and fraternity houses, boarding houses, hotels, service garages, wholesale houses, filling stations, barber shops, beauty parlors, common areas of shopping malls or apartments (such as halls or basements), churches, elevators, schools and facilities located away from the home site (this is not an all-inclusive list).
- d. If separate metering is not practical for premises that is using electricity for both residential purposes and for conducting business (or for nonresidential purposes), the customer will be billed under the predominate use policy. Under this policy, the customer's combined service is billed under the rate (Residential or General) applicable to the type of service which constitutes more than 50% of the total connected load.
- e. These rules will not change the classification of existing customers who were served electricity prior to October 1, 1988 except in the event of a different customer taking responsibility for the account.
- f. Other classes of service furnished by the Company shall be defined in applicable rate schedules or in rules and regulations

Date Filed: January 4, 2019

Effective Date: Service rendered on and after January 1, 2019

Issued By: Tamie A. Aberle
Director – Regulatory Affairs

Docket No.: 20004-128-EA-18



Montana-Dakota Utilities Co.

A Subsidiary of MDU Resources Group, Inc.

400 N 4th Street
Bismarck, ND 58501

State of Wyoming Electric Rate Schedule

W.P.S.C. Tariff No. 1
Original Sheet No. 102

CONDITIONS OF SERVICE Rate 100

Page 13 of 54

pertaining thereto. Service to customers for which no specific rate schedule is applicable shall be billed on the appropriate General Electric Service Rate.

4. CUSTOMER DEPOSITS - The Company may require a deposit from an applicant for electric service (applicant) or an existing customer in accordance with Chapter 3, Section 7 of the Wyoming Public Service Commission's Rules:

The Company may require a deposit to guarantee payment for each service. This deposit shall not be considered as an advance payment of bills but shall be held as security for payment of service rendered. The Company may refuse service to an applicant or discontinue service to a customer for failure to comply with customer deposit requirements. The Company shall apply the policies governing customer deposits uniformly.

- a. The Company may require a deposit if:
- i. A prior service account with the Company remains unpaid and undisputed at the time of application for service;
 - ii. Service from the Company has been discontinued for:
 - A. Nonpayment of any undisputed delinquent bill;
 - B. Failure to reimburse the Company for damages due to the customer's negligent or intentional acts; or
 - C. Acquisition, diversion or use of service without the authorization of or knowledge by the Company;
 - iii. Information provided upon application for service is materially false or a misrepresentation;
 - iv. The application is for initial service with the Company or the applicant did not have service with the Company for a

Date Filed: January 4, 2019

Effective Date: Service rendered on and after January 1, 2019

Issued By: Tamie A. Aberle
Director – Regulatory Affairs

Docket No.: 20004-128-EA-18



Montana-Dakota Utilities Co.

A Subsidiary of MDU Resources Group, Inc.

400 N 4th Street
Bismarck, ND 58501

State of Wyoming Electric Rate Schedule

W.P.S.C. Tariff No. 1
Original Sheet No. 103

CONDITIONS OF SERVICE Rate 100

Page 14 of 54

period of at least 12 consecutive months during the past four years;

- v. The applicant or non-residential customer is unable to pass an objective credit screen. In order to pass the objective credit screen, the applicant or non-residential customer must fulfill one or a combination of the following:
 - A. Received 12 consecutive months of service from the Company, with the undisputed portions of the 12 most recent bills paid in full when due;
 - B. Have a favorable credit rating with a third-party credit reporting agency; or
 - C. Receive a favorable credit rating from the Company's financial risk assessment tool.
- vi. The request is for service at an address where a former customer with an undisputed delinquent bill for service still resides or conducts business;
- vii. The applicant or the customer, has been brought within the jurisdiction of the bankruptcy court, or has had a receiver appointed in a state court proceeding, within the five-year period immediately preceding the request for service; or
- viii. The Company has determined that it has a significant financial risk in continuing to provide service to a specific non-residential customer. The Company and the customer may attempt to reach a deposit agreement. If the Company and the customer are unable to reach an agreement, the Company shall file a confidential petition requesting expedited review and Commission approval prior to collecting the customer deposit. The petition shall contain the basis for the Company's determination, the amount of

Date Filed: January 4, 2019

Effective Date: Service rendered on and after January 1, 2019

Issued By: Tamie A. Aberle
Director – Regulatory Affairs

Docket No.: 20004-128-EA-18



Montana-Dakota Utilities Co.

A Subsidiary of MDU Resources Group, Inc.

400 N 4th Street
Bismarck, ND 58501

State of Wyoming Electric Rate Schedule

W.P.S.C. Tariff No. 1
Original Sheet No. 104

CONDITIONS OF SERVICE Rate 100

Page 15 of 54

deposit sought and sufficient information for the Commission to contact the customer.

- b. The Company shall not require a deposit as a condition of new or continued utility service based upon any criterion not specifically authorized by the Wyoming Public Service Commission's Rules.
- c. Unless otherwise ordered by the Commission, the required deposit shall not exceed the total amount of the customer's estimated bill for three months of highest use based on the premises' monthly bills during the immediate previous 12-month period. If billing information for the immediate previous 12-month period is not available, the deposit will be based on anticipated service characteristics and anticipated load.
- d. The Company shall retain records showing:
 - i. The name and address of each customer making the deposit;
 - ii. The date and amount of the deposit; and
 - iii. Each accounting transaction concerning the deposit.
- e. The Company shall provide the customer a non-assignable receipt or other record of deposit, showing the date and amount received.
- f. The Company shall calculate simple interest on deposits at the Commission Authorized Interest Rate described in Chapter 1, Section 2 (a)(xv) of the Wyoming Public Service Commission's Rules. Interest shall apply only to deposits held for at least six months, but shall accrue from the initial date of deposit through the date the deposit is returned to the customer.

Date Filed: January 4, 2019

Effective Date: Service rendered on and after January 1, 2019

Issued By: Tamie A. Aberle
Director – Regulatory Affairs

Docket No.: 20004-128-EA-18



Montana-Dakota Utilities Co.

A Subsidiary of MDU Resources Group, Inc.

400 N 4th Street
Bismarck, ND 58501

State of Wyoming Electric Rate Schedule

W.P.S.C. Tariff No. 1
Original Sheet No. 105

CONDITIONS OF SERVICE Rate 100

Page 16 of 54

- g. The Company may accept a written guarantee from an acceptable guarantor in lieu of a deposit to pay a customer's bill. After the Company has verified the customer's identity, the customer shall agree to permit the Company to provide the customer's account information to the guarantor upon the customer's default.
- h. Deposits and any unpaid interest earned on deposits shall be applied as a credit to the customer's bill, unless requested by the customer to be refunded, when:
 - i. The accrued interest equals or exceeds \$10.00. The Company shall apply the credit at least annually;
 - ii. A residential customer has received 12 consecutive months of service, with no cause to discontinue service; and the customer's bills have been paid when due;
 - iii. A commercial or industrial customer has received 12 consecutive months of service, with no cause to discontinue service; the customer's bills have been paid when due; and the customer passes the Company's objective credit screen; or
 - iv. Service is discontinued. The Company shall not require the customer to provide the original receipt in order for the deposit to be returned. Any credit balance on the account after the deposit is applied shall be refunded to the customer. If the Company is unable to make the refund due to lack of knowledge of the customer's location, additional interest will not accrue after the service discontinuation date. The Company shall manage such deposits as unclaimed property as required by Wyoming law (W.S. § 34-24-109).

Date Filed: January 4, 2019

Effective Date: Service rendered on and after January 1, 2019

Issued By: Tamie A. Aberle
Director – Regulatory Affairs

Docket No.: 20004-128-EA-18



Montana-Dakota Utilities Co.

A Subsidiary of MDU Resources Group, Inc.

400 N 4th Street
Bismarck, ND 58501

State of Wyoming Electric Rate Schedule

W.P.S.C. Tariff No. 1
Original Sheet No. 106

CONDITIONS OF SERVICE Rate 100

Page 17 of 54

5. METERING AND MEASUREMENT
- a. Company will meter the electric service delivered to customer at the delivery point. Such meter measurement will be conclusive upon both parties unless such meter is found to be inaccurate, in which case the quantity supplied to customer shall be determined by as correct an estimate as it is possible to make, taking into consideration the time of year, the schedule of customer's operations and other pertinent facts.
 - b. Meter Testing
 - 1) Company's Testing - The Company's ongoing meter testing program is set forth in Rate 115.
 - 2) Customer's Request - Upon request of the customer for a test of the accuracy of the Company's meter used on the customer's premises, the following provisions shall apply:
 - a. If the meter has not been tested within 12 months, the Company shall perform the test within a reasonable time without charge to the customer. The Company shall notify the customer of the time when the Company will conduct the test so the customer or the customer's representative may be present.
 - b. If the meter has been tested within 12 months, the Company shall notify the customer the cost to perform the test. The Company shall notify the customer of the time when the Company will conduct the test so the customer or the customer's representative may be present.
 - c. The Company shall promptly advise the customer of the test results.
 - d. If a meter is found to be in non-compliance with the Company's approved meter testing program, the

Date Filed: January 4, 2019

Effective Date: Service rendered on and after January 1, 2019

Issued By: Tamie A. Aberle
Director – Regulatory Affairs

Docket No.: 20004-128-EA-18



Montana-Dakota Utilities Co.

A Subsidiary of MDU Resources Group, Inc.

400 N 4th Street
Bismarck, ND 58501

State of Wyoming Electric Rate Schedule

W.P.S.C. Tariff No. 1
Original Sheet No. 107

CONDITIONS OF SERVICE Rate 100

Page 18 of 54

Company shall refund the payment the customer advanced for the meter test and shall repair or replace the meter. The Company shall also adjust and refund to the customer the overpayment of preceding bills, in accordance with §V.6. No refund is required from the Company except to the customer last served by the meter prior to testing. If the Company has under collected, the customer shall pay the adjusted costs in accordance with §V.6.

- e. The meter accuracy test charge amount is provided in §VI.1.e.

6. BILLING ADJUSTMENTS

- a. In accordance with Wyo. Stat. § 37-2-218, if the Company charged, collected or received any rate or rates in excess of the rates fixed in the Company's tariff, the Company shall immediately refund to the customer the difference between the rates fixed in the tariff and the rates charged, collected or received. This shall also apply to meter errors described in §V.5.
- b. If the Company undercharged a customer as a result of a meter or metering inaccuracy or other continuing problem under the Company's control, the Company may bill the customer in accordance with Wyo. Stat. § 37-2-222, for the amount of unmetered electricity rendered in the 183 days immediately prior to the date the Company remedies the meter inaccuracy. The typical time period over which the undercharge may be collected shall be 12 consecutive months. The customer may elect to pay over a shorter period, or the Company may allow repayment over a longer period. This shall also apply to meter errors described in §V.5.

Date Filed: January 4, 2019

Effective Date: Service rendered on and after January 1, 2019

Issued By: Tamie A. Aberle
Director – Regulatory Affairs

Docket No.: 20004-128-EA-18



Montana-Dakota Utilities Co.

A Subsidiary of MDU Resources Group, Inc.

400 N 4th Street
Bismarck, ND 58501

State of Wyoming Electric Rate Schedule

W.P.S.C. Tariff No. 1
Original Sheet No. 108

CONDITIONS OF SERVICE Rate 100

Page 19 of 54

7. LATE PAYMENT - Amounts billed will be considered past due if not paid by the due date shown on the bill. An amount equal to the percentage set forth in §VI.2. will be applied to any past due balance, provided however, that such amount shall not apply where a bill is in dispute or a formal complaint is being processed. All payments received will apply to the customer's account prior to calculating the late payment charge. Those payments applied shall satisfy the oldest portion of the bill first.
8. RETURNED CHECK CHARGE - A charge as set forth in §VI.1.b will be collected by the Company for any check not honored by the customer's bank for any reason.
9. TAX CLAUSE
 - a. In addition to the charges provided for in the electric tariffs of the Company, there shall be charged pro rata amounts which, on an annual basis, shall be sufficient to yield to the Company the full amount of:
 1. Any sales, use or excise taxes whether they be denominated as license taxes, occupation taxes, business taxes, privilege taxes, or otherwise levied against or imposed upon the Company by any municipality, political subdivision, or other entity, for the privilege of conducting its utility operations therein.
 2. Any payment under any electric franchise ordinance amounting to more than 1% annually of the gross electric revenue derived by the Company from electric business within the corporate limits of the municipality, political subdivision, or other entity, imposing the payment.
 3. The taxes imposed by the Sheridan Ordinance as adjusted for accounting and billing costs.

Date Filed: January 4, 2019

Effective Date: Service rendered on and after January 1, 2019

Issued By: Tamie A. Aberle
Director – Regulatory Affairs

Docket No.: 20004-128-EA-18



Montana-Dakota Utilities Co.

A Subsidiary of MDU Resources Group, Inc.

400 N 4th Street
Bismarck, ND 58501

State of Wyoming Electric Rate Schedule

W.P.S.C. Tariff No. 1
Original Sheet No. 109

CONDITIONS OF SERVICE Rate 100

Page 20 of 54

- b. The charges to be added to the customers' service bills under this clause shall be limited to the customers within the corporate limits of the municipality, political subdivision, or other entity imposing the tax.
10. UTILITY CUSTOMER SERVICES:
- a. The following services will be performed at no charge regardless of the time of performance:
 - 1. Fire Call
 - 2. Investigate hazardous condition on customer premises.
 - 3. No lights or power investigation.
 - 4. Maintenance or repair of the following Company-owned equipment on the customer's premises:
 - i. Meter
 - ii. Overhead Service Line
 - iii. Underground Service Line
 - b. The following service calls will be performed at no charge during the Company's normal business hours of 8:00 a.m. – 5:00 p.m. Monday through Friday local time:
 - 1. A reconnection of service to an existing facility (cut-ins) or a discontinuation of service
 - 2. Checking Voltage or Loads
 - 3. Locating Radio, CB or Television Interference
 - 4. High Bill Complaint

Date Filed: January 4, 2019

Effective Date: Service rendered on and after January 1, 2019

Issued By: Tamie A. Aberle
Director – Regulatory Affairs

Docket No.: 20004-128-EA-18



Montana-Dakota Utilities Co.

A Subsidiary of MDU Resources Group, Inc.

400 N 4th Street
Bismarck, ND 58501

State of Wyoming Electric Rate Schedule

W.P.S.C. Tariff No.1
Original Sheet No. 110

CONDITIONS OF SERVICE Rate 100

Page 21 of 54

11. UTILITY SERVICES PERFORMED AFTER NORMAL BUSINESS HOURS - For service requested by customers after the Company's normal business hours defined in §V.10 and on Saturday, Sunday, or legal holidays, a charge will be made for labor at the overtime service rate set forth in §VI.1.f. plus the cost of any required materials.

Customers requesting service after the Company's normal business hours will be informed of the after hour service rate and encouraged to have the service performed during normal business hours.
12. NOTICE TO DISCONTINUE ELECTRIC SERVICE - Customers desiring to have their electric service discontinued shall notify the Company during regular business hours, at least one business day before service is to be disconnected. Such notice shall be by letter, personal visit or telephone call to the Company's local business office, in communities in which an office is maintained. In other communities such notice shall be given to the Company's representative who services the community or to the nearest business office. Saturdays, Sundays and legal holidays are not considered business days.
13. RECONNECTION FEE FOR SEASONAL OR TEMPORARY CUSTOMERS - A fee, as set forth in §VI.1.d. will be collected for reconnecting electric service to any customer who has discontinued electric service at the same location during the preceding 12 month period, provided no other customer has taken service at the same location in the meantime.
14. DISCONTINUANCE OF SERVICE FOR NONPAYMENT OF BILLS - All amounts billed for service are due by the due date on the bill and will be considered delinquent if not paid by the due date shown on the bill. If any customer shall become delinquent in the payment of amounts billed, such service may be discontinued by the Company in accordance with Chapter 3, Section 9 of the Wyoming Public Service Commission's Rules.

Date Filed: January 4, 2019

Effective Date: Service rendered on and
after January 1, 2019

Issued By: Tamie A. Aberle
Director – Regulatory Affairs

Docket No.: 20004-128-EA-18



Montana-Dakota Utilities Co.

A Subsidiary of MDU Resources Group, Inc.

400 N 4th Street
Bismarck, ND 58501

State of Wyoming Electric Rate Schedule

W.P.S.C. Tariff No. 1
Original Sheet No. 111

CONDITIONS OF SERVICE Rate 100

Page 22 of 54

- a. Discontinuation Notice - The Company may discontinue service by reason of nonpayment after issuing a disconnect notice and upon not less than 7 days' notice of proposed termination for residential customers and not less than 3 days' notice for nonresidential customers. The disconnect notice will be mailed or delivered to the account holder or by telephone after customer verification and mailed to any third party previously designated by the account holder. Additional notice may be provided electronically. The notice shall contain:
1. The name of the person whose account is delinquent and the service address to be discontinued;
 2. The amount of the delinquent bill;
 3. The effective date of the notice and the date on or after which service is to be discontinued;
 4. The Company's specific address and telephone number for information regarding how to avoid service discontinuation;
 5. The names of agencies or organizations that have notified the Company that they render assistance to eligible persons who are unable to pay their utility bills; and
 6. A statement advising the customer how to contact the Commission if discontinuation is disputed.
- b. Landlord Account Holders - When the Company is discontinuing service for nonpayment by a landlord, the Company shall post, mail, or deliver to each known tenant a written notice, excluding the dollar amount, informing the tenant only of the impending disconnection and advising each tenant it has 15 days to arrange directly for service, as permitted by the available facilities. The tenant shall not be held responsible for the landlord's delinquent utility billings. The Company will post the

Date Filed: January 4, 2019

Effective Date: Service rendered on and after January 1, 2019

Issued By: Tamie A. Aberle
Director – Regulatory Affairs

Docket No.: 20004-128-EA-18



Montana-Dakota Utilities Co.

A Subsidiary of MDU Resources Group, Inc.

400 N 4th Street
Bismarck, ND 58501

State of Wyoming Electric Rate Schedule

W.P.S.C. Tariff No. 1
Original Sheet No. 112

CONDITIONS OF SERVICE Rate 100

Page 23 of 54

notice at a central location on or in the rental building if all tenants cannot be identified.

- c. The Company will notify the customer that, if prior to the initial date for the discontinuation of service, the customer provides the Company with written verification from a health care provider responsible for the care of customer or his/her co-habitants stating that their health or safety would be seriously endangered if service were discontinued, the Company shall extend the date for discontinuation set forth in the notice by 15 days (22 days total) to allow for bill payment.
- d. The Company shall attempt to make actual contact with the customer either in person or by telephone, after the customer verification, before discontinuing service during the cold weather period of November 1 through April 30.
- e. The Company shall also provide notice of discontinuation or account delinquency to a third party if the customer or person acting for the customer has requested that the Company do so after the customer identification verification. The Company shall advise the Customer that the right to request third-party notification does not create third-party liability for payment.
- f. If the customer defaults, the Company shall provide the discontinuation notice to any guarantor and the customer simultaneously. The guarantor's service shall not be subject to discontinuation as a result of the customer's default.
- g. The Company shall remove a guarantor when:
 1. The customer has received 12 consecutive months of service with no cause for discontinuation, bills have been paid when due and the customer passes an objective credit screen;

Date Filed: January 4, 2019

Effective Date: Service rendered on and after January 1, 2019

Issued By: Tamie A. Aberle
Director – Regulatory Affairs

Docket No.: 20004-128-EA-18



Montana-Dakota Utilities Co.

A Subsidiary of MDU Resources Group, Inc.

400 N 4th Street
Bismarck, ND 58501

State of Wyoming Electric Rate Schedule

W.P.S.C. Tariff No. 1
Original Sheet No. 113

CONDITIONS OF SERVICE Rate 100

Page 24 of 54

2. The guarantor has paid all amounts due for service through the date the Company received the request to terminate the guarantor agreement; or
3. An additional agreement with the Company is in place.
- h. Reconnection After Nonpayment - To have service restored after discontinuation of service for nonpayment, a residential or a non-residential customer must first pay a charge for reconnection as set forth in §VI.1.c, and must also pay the delinquent balance in full or execute a written deferred payment agreement, if eligible. The Company may also require a deposit to secure payment of future electric bills. See §V.4 Customer Deposits.
- i. Discontinuation - The Company may discontinue service between 8:00 a.m. to 4:00 p.m., Monday through Thursday if not a legal holiday or the day preceding a legal holiday without further notice when:
 1. The notification period has elapsed and the delinquent account has not been paid; or
 2. Acceptable payment arrangements have not been made with the Company.
- j. Service Extender – Service Extender provides a temporary alternative to discontinuing electric service for non-payment by extending a controlled level of service to the delinquent customer prior to service being discontinued. The minimum size Service Extender used for a Residential customer is 10 amps. Service Extenders shall not be applicable to a residence where the primary source of heating is electricity. If the Company chooses to install a Service Extender, service may be

Date Filed: January 4, 2019

Effective Date: Service rendered on and after January 1, 2019

Issued By: Tamie A. Aberle
Director – Regulatory Affairs

Docket No.: 20004-128-EA-18



Montana-Dakota Utilities Co.

A Subsidiary of MDU Resources Group, Inc.

400 N 4th Street
Bismarck, ND 58501

State of Wyoming Electric Rate Schedule

W.P.S.C. Tariff No. 1
Original Sheet No. 114

CONDITIONS OF SERVICE Rate 100

Page 25 of 54

discontinued without further notification. Notification of the Service Extender shall be delivered to an adult or posted at the affected premises and shall include:

1. The customer's name;
 2. Date the Service Extender was installed;
 3. Customer operational instructions for the Service Extender;
 4. Telephone number and address of the Company; and
 5. Warning that service may be discontinued without further notification.
- k. The Company shall assist persons who are unable to pay their electric service bills with determining available government assistance.
15. PROHIBITIONS AGAINST SERVICE DISCONTINUATION – The Company shall not terminate service for bill nonpayment under the following conditions:
- a. On a legal holiday as defined by Wyoming Statute §8-4-101, or the day before such a legal holiday;
 - b. During the period from December 24 through January 2, inclusive;
 - c. On any day in which the Company cannot reconnect service;
 - d. If the customer enters into an arrangement with the Company for payment of the delinquent billing over a reasonable time and the customer complies with payment arrangements;

Date Filed: January 4, 2019

Effective Date: Service rendered on and after January 1, 2019

Issued By: Tamie A. Aberle
Director – Regulatory Affairs

Docket No.: 20004-128-EA-18



Montana-Dakota Utilities Co.

A Subsidiary of MDU Resources Group, Inc.

400 N 4th Street
Bismarck, ND 58501

State of Wyoming Electric Rate Schedule

W.P.S.C. Tariff No. 1
Original Sheet No. 115

CONDITIONS OF SERVICE Rate 100

Page 26 of 54

- e. If there are monies owed due to meter or other billing error, and the customer complies with payment arrangements;
- f. At a previous address for a different class of service;
- g. For nonutility services or appliance or merchandise provided by, or sold by, the Company to the customer;
- h. If the customer is paying the electric service bills on time, even though a prior customer with an undisputed delinquent bill for service resides or conducts business at the same address;
- i. If an electric service bill, or part of a bill, is legitimately in dispute, and if the customer duly pays the electric service bill, or bill portion, not in dispute;
- j. If the temperature for the community closest to the customer's location is forecasted by the National Weather Service or other reputable source to be below 32°F in the impending 48 hours, or if conditions are otherwise especially dangerous to health, and the customer is:
 - 1. Unable to pay for service in accordance with the Company's billing requirements and is actively seeking government assistance or has exhausted such assistance; or
 - 2. Able to pay for service in installments; or
- k. If the customer pays a bill on time for a specific service at a specific location, even though the customer is receiving another service that is subject to discontinuation for bill nonpayment.

Date Filed: January 4, 2019

Effective Date: Service rendered on and after January 1, 2019

Issued By: Tamie A. Aberle
Director – Regulatory Affairs

Docket No.: 20004-128-EA-18



Montana-Dakota Utilities Co.

A Subsidiary of MDU Resources Group, Inc.

400 N 4th Street
Bismarck, ND 58501

State of Wyoming Electric Rate Schedule

W.P.S.C. Tariff No. 1
Original Sheet No. 116

CONDITIONS OF SERVICE Rate 100

Page 27 of 54

16. DISCONTINUANCE OF SERVICE FOR CAUSES OTHER THAN NONPAYMENT OF BILLS - The Company reserves the right to discontinue service for any of the following reasons:
- a. For the use of electricity for any property or purpose other than that described in the application made for service.
 - b. For failure to maintain in good order service entrance facilities or equipment owned by the customer.
 - c. For use of equipment which adversely affects the Company's service to its other customers.
 - d. For refusal of reasonable access to property to the agent or employee of the Company for the purpose of inspecting the facilities or for testing, reading, maintaining or removing meters.
 - e. The Company may discontinue service for causes other than non-payment after issuing a disconnect notice in accordance with §V.14 a. The discontinuance of service for causes other than non-payment shall occur on the days and during the hours stated in §V.14 i.
 - f. The right to discontinue service for any of the above reasons may be exercised whenever and as often as such reasons may occur, and any delay on the part of the Company in exercising such rights, or omission of any action permissible hereunder, shall not be deemed a waiver of its rights to exercise same.
 - g. The Company may discontinue service without advance notice for reasons of safety, health, cooperation with civil authorities, fraudulent use, tampering with or destroying Company facilities.
 - h. The Company may collect a reconnect fee as prescribed in §VI.1.c. before restoring electric service which has been discontinued for the above causes.

Date Filed: January 4, 2019

Effective Date: Service rendered on and after January 1, 2019

Issued By: Tamie A. Aberle
Director – Regulatory Affairs

Docket No.: 20004-128-EA-18



Montana-Dakota Utilities Co.

A Subsidiary of MDU Resources Group, Inc.

400 N 4th Street
Bismarck, ND 58501

State of Wyoming Electric Rate Schedule

W.P.S.C. Tariff No. 1
Original Sheet No. 117

CONDITIONS OF SERVICE Rate 100

Page 28 of 54

17. BILL DISCOUNT FOR QUALIFYING EMPLOYEES - A bill discount may be available for residential use only in a single family unit served by Montana-Dakota Utilities Co. to qualifying retirees of Montana-Dakota Utilities Co. The bill shall be computed at the applicable rate, and the amount reduced by 33 1/3%.
18. REFUSAL TO SERVE NEW CUSTOMERS OR EXPAND EXISTING SERVICE – A utility may refuse to provide, expand or materially change service to a requesting customer when:
 - a. The Company does not have adequate facilities to render the service requested;
 - b. The requested service appears to be unsafe or likely to adversely affect service to another customer; or
 - c. The requesting customer is indebted to the Company for service previously rendered and satisfactory payment arrangements have not been made with the utility.
 1. If indebtedness for service rendered at a former location is in dispute, the requesting customer shall be provided service at the new location upon complying with the Company's deposit requirements and paying the amount in dispute. Upon settlement of the disputed amount, any balance due the customer shall be refunded with accrued interest at the Commission Authorized Interest Rate described in Chapter 1, Section 2(a)(XV) of the Wyoming Public Service Commission Rules.
 2. The Company shall not refuse service to a new customer because of debts of a previous customer at the same location.
 3. The Company may refuse service due to unpaid line extension charges for facilities serving the location.

Date Filed: January 4, 2019

Effective Date: Service rendered on and after January 1, 2019

Issued By: Tamie A. Aberle
Director – Regulatory Affairs

Docket No.: 20004-128-EA-18



Montana-Dakota Utilities Co.

A Subsidiary of MDU Resources Group, Inc.

400 N 4th Street
Bismarck, ND 58501

State of Wyoming Electric Rate Schedule

W.P.S.C. Tariff No. 1
1st Revised Sheet No. 118
Canceling Original Sheet No. 118

CONDITIONS OF SERVICE Rate 100

Page 29 of 54

VI. MISCELLANEOUS CHARGES

	<u>Amount or Reference</u>
1. Service Charges	
a. Consumer deposits	Rate 100 §V.4.
b. Returned check	\$20.00
c. Minimum reconnect charge after discontinuation of service for nonpayment or other causes	
- During normal business hours	\$20.00
- Removal of service extender	\$20.00
- After normal business hours	Minimum of \$140.00
d. Minimum reconnect charge applicable to seasonal or temporary customers	
- During normal business hours	
- Customers with non-demand meters	\$20.00
- Customers with demand meters	\$40.00
- After normal business hours	Minimum of \$140.00
e. Special test of meter at customer's request (see Rate 100 §V.5.b.2 as to when this charge is applicable)	
- Meter error more than ±2%	None
- Meter error within ±2% and meter was tested within the prior 12 months	Labor & materials Minimum of \$25.00
f. Service request after normal business hours	Materials & labor Minimum of \$140.00

Date Filed: February 28, 2024

Effective Date: Service rendered on and
after April 11, 2024

Issued By: Travis R. Jacobson
Director – Regulatory Affairs

Docket No.: 20004-165-ET-24
Record No. 17514



Montana-Dakota Utilities Co.

A Subsidiary of MDU Resources Group, Inc.

400 N 4th Street
Bismarck, ND 58501

State of Wyoming Electric Rate Schedule

W.P.S.C. Tariff No. 1
1st Revised Sheet No. 119
Canceling Original Sheet No. 119

CONDITIONS OF SERVICE Rate 100

Page 30 of 54

g. Electric extension policy Rate 104

	<u>Per Month</u>	<u>Approx. Annual Percent</u>
2. Late Payment Charges (on unpaid balance)	1%	12%

SEE ALSO THE FOLLOWING RATES FOR SPECIAL PROVISIONS:

- Rate 104 - Electric Extension Policy
- Rate 105 - Dark Sky Lighting Service
- Rate 122 - AutoPay Plan
- Rate 125 - Balanced Billing Plan

VII. ELECTRIC SERVICE RULES:

Section 100 – GENERAL

101. Electrical Codes and Ordinances

The Electric Service Rules and Regulations contained herein are supplementary to and do not intentionally conflict with nor supersede the latest edition of the National Electrical Code, the National Electrical Safety Code, nor such state and municipal laws and ordinances that may be in effect in the areas in which the Company furnishes electric service, except that where the requirements of these Electric Service Rules and Regulations exceed those of such codes, laws, and ordinances, these Electric Service Rules and Regulations shall apply. Existing installations, including maintenance replacements, that currently comply with prior revisions of these rules and regulations, need not be modified to comply with these rules except as may be required for safety reasons.

102. Wiring Adequacy

Wiring codes provide minimum requirements for safety. Installation of wiring capacity greater than minimum code requirements is recommended to bring to the customer all the benefits of electric service and to protect building investment by minimizing obsolescence resulting from an inadequate wiring system.

Date Filed: March 27, 2020

Effective Date: Served rendered on and after May 1, 2020

Issued By: Travis R. Jacobson
Director – Regulatory Affairs

Docket No.: 20004-146-ET-20



Montana-Dakota Utilities Co.

A Subsidiary of MDU Resources Group, Inc.

400 N 4th Street
Bismarck, ND 58501

State of Wyoming Electric Rate Schedule

W.P.S.C. Tariff No. 1
Original Sheet No. 120

CONDITIONS OF SERVICE Rate 100

Page 31 of 54

103. Inspection of Wiring

Where permits and inspections covering customer's wiring and installation are required by local ordinance, it is mandatory that such requirements be fulfilled before the Company will make connections to the customer's installation. In locations where such inspections are not required by law or ordinance, an affidavit by the wiring contractor stating that the wiring has been done in compliance with the National Electrical Code will be acceptable.

104. Permits, Certificates, Affidavits

It is the responsibility of the customer to obtain all necessary permits, certificates of inspection or affidavits as required in Paragraph 103 above and to notify the Company promptly of any proposed alterations or additions to customer's load. Failure to comply with these requirements may result in delayed connection, interruption of service or damage to apparatus.

105. Consultation with the Company

105.1 The location, size and character of the customer's load and the current, voltage, frequency, phases, etc. which the Company has available at the customer's location will determine the type of service supplied to the customer.

105.2 Architects, engineers, contractors, electric dealers, wiremen and others must confer with local representatives of the Company to determine the type of service that will be available before designing or preparing specifications for new electrical installations or alterations to existing installations.

105.3 In all cases involving large installations and other cases where any doubt exists, full information as to the type of service available should be obtained from the Company.

106. Unauthorized Use of Service

106.1 Unauthorized use of service is defined as any deliberate interference that results in a loss of revenue to the Company. Violators are subject to prosecution.

106.2 Types of unauthorized use of service include, but are not limited to, the following:

- (a) Bypass around meter.
- (b) Meter reversed.

Date Filed: January 4, 2019

Effective Date: Service rendered on and after January 1, 2019

Issued By: Tamie A. Aberle
Director – Regulatory Affairs

Docket No.: 20004-128-EA-18



Montana-Dakota Utilities Co.

A Subsidiary of MDU Resources Group, Inc.

400 N 4th Street
Bismarck, ND 58501

State of Wyoming Electric Rate Schedule

W.P.S.C. Tariff No. 1
Original Sheet No. 121

CONDITIONS OF SERVICE Rate 100

Page 32 of 54

- (c) Equipment connected ahead of meter.
- (d) Tampering with meter that affects the accurate registration of electric usage.
- (e) Electricity being used after service has been discontinued by the Company.

106.3 In the event that there has been unauthorized use of service, customer shall be charged for:

- (a) All costs associated with investigation or surveillance;
- (b) Estimated charge for non-metered electricity;
- (c) All time to correct situation;
- (d) Any damage to Company property.

106.4 A customer's service disconnected for unauthorized use of service shall be reconnected after the customer has furnished satisfactory evidence of compliance with Company's rules and conditions of service, and paid any charges which are due, including:

- (a) All delinquent bills, if any;
- (b) The amount of any Company revenue loss attributable to said tampering;
- (c) Expenses incurred by the Company in replacing or repairing the meter or other equipment, costs incurred in the preparation of the bill, plus costs as outlined in Paragraph 106.3;
- (d) Applicable reconnection fee;
- (e) A cash deposit, the amount of which will not exceed the maximum amount determined in accordance with §V.4 and Chapter 3, Section 7 of the Wyoming Public Service Commission's Rules.

107. Unauthorized Attachments to Poles

107.1 The unauthorized attachment of any flags, banners, signs, clothes lines, antennas, etc. to Company poles is prohibited. The use of poles for placards or other advertising matter is forbidden. The Company will remove such unauthorized attachments without notice and may prosecute any such trespassers.

Date Filed: January 4, 2019

Effective Date: Service rendered on and after January 1, 2019

Issued By: Tamie A. Aberle
Director – Regulatory Affairs

Docket No.: 20004-128-EA-18



Montana-Dakota Utilities Co.

A Subsidiary of MDU Resources Group, Inc.

400 N 4th Street
Bismarck, ND 58501

State of Wyoming Electric Rate Schedule

W.P.S.C. Tariff No. 1
Original Sheet No. 122

CONDITIONS OF SERVICE Rate 100

Page 33 of 54

107.2 Customers are cautioned to locate antennas so that they are beyond falling distance from the Company's lines, either transmission or distribution. Antennas and lead-ins shall be located a safe distance from and shall never cross over or under the Company's lines or contact the Company's poles. The Company disclaims all responsibility where such equipment contacts the Company's lines, poles or equipment.

Section 200 - USE OF ELECTRIC SERVICE

201. Rate Schedules

Electric service will be billed under the rate schedule that applies to the class of service used. Rate schedules applicable to various classes of service may be obtained from the Company upon request.

202. Resale of Energy

The Company will not supply energy for resale except as expressly covered by special contract or where such provision is a part of the rate schedule.

203. Temporary Service

Temporary service is any service for construction work, carnivals, gravel pits, occasional lighting, etc., which is not expected to continue in use for a period long enough to justify the construction cost necessary for extending service. When temporary service is desired the customer shall, in addition to paying the scheduled rates, make deposit in advance in the amount of the Company's estimated cost of installing and furnishing such temporary service facilities together with the cost of disconnecting and removing same and the estimated billing to the customer for electric service. Final billing will reflect credit for the salvage value of materials used in providing the temporary service. Any deficiency in such advance payment shall be paid by the customer upon presentation of a bill by the Company. Any amount deposited in excess of final billing by the Company will be refunded to the customer.

204. Standby Service

Where electric service is supplied as standby to a customer's generating facilities or vice versa, the customer shall provide and install at the customer's expense a suitable double-throw switch or other device which will completely isolate the customer's power facilities from the Company's system. The service entrance shall be installed so that the

Date Filed: January 4, 2019

Effective Date: Service rendered on and
after January 1, 2019

Issued By: Tamie A. Aberle
Director – Regulatory Affairs

Docket No.: 20004-128-EA-18



Montana-Dakota Utilities Co.

A Subsidiary of MDU Resources Group, Inc.

400 N 4th Street
Bismarck, ND 58501

State of Wyoming Electric Rate Schedule

W.P.S.C. Tariff No. 1
Original Sheet No. 123

CONDITIONS OF SERVICE Rate 100

Page 34 of 54

phase conductors will be totally isolated from the customer's wiring before the standby unit is put into operation.

205. Parallel Service

Parallel operation of the customer's generating equipment with the Company's system shall be permitted to the extent provided in other approved rates.

206. Transformer Installations on Customer's Premises

206.1 The Company will supply transformers to be installed on the customer's premises when requested by the customer and in accordance with the following paragraphs.

206.2 The customer shall agree to indemnify and save the Company harmless, except for willful default or neglect on the Company's part, from any loss, damage, expense or liability, incurred or arising from, or out of the installation, operation, maintenance, repair or removal of its transformers, cables, conductors, apparatus and all other Company property, material or equipment placed on the customer's premises.

206.3 Company's power or distribution transformers will not be installed in the customer's building.

206.4 The Company will furnish, own and maintain conventional oil filled transformers at no cost to the customer. However, where dry type transformers, transformers containing a nonflammable insulating coolant or oil filled transformers of special voltage or design are required they shall be owned, installed and maintained by the customer at the customer's expense.

206.5 Padmount transformers may be installed on customer's premises. The customer shall furnish a suitable concrete pad, conduit, ground rod and service conductors as noted in Figure 5. Where the customer has more than four parallel conductors, a cable junction enclosure and conduits to the transformer location may be required. The customer shall consult with the Company to determine when a cable junction enclosure is required.

206.6 Where the transformer is installed adjacent to an asphalt or concrete driveway, parking lot, or walkway, the customer shall provide conduit from the transformer location to a point beyond the driveway, parking lot, or walkway to accommodate the Company's

Date Filed: January 4, 2019

Effective Date: Service rendered on and
after January 1, 2019

Issued By: Tamie A. Aberle
Director – Regulatory Affairs

Docket No.: 20004-128-EA-18



Montana-Dakota Utilities Co.

A Subsidiary of MDU Resources Group, Inc.

400 N 4th Street
Bismarck, ND 58501

State of Wyoming Electric Rate Schedule

W.P.S.C. Tariff No. 1
Original Sheet No. 124

CONDITIONS OF SERVICE Rate 100

Page 35 of 54

primary voltage cable. The customer shall provide barriers and clear zones to protect transformer from damage and to allow proper cooling and access to conductor compartments. The customer shall consult with the Company to determine the proper size conduit and protective barriers.

206.7 Refer to Figure 5 for additional information on transformer location.

Section 300 - ELECTRIC SERVICE AVAILABLE

301. Frequency

All service supplied by the Company is alternating current at a nominal frequency of 60 Hertz.

302. Secondary Voltages (See also Section 400.)

302.1 In general, the following classes of service are normally supplied:

<u>Phase</u>	<u>Wires</u>	<u>Nominal Voltage</u>	<u>Nominal Service</u>	
	1	3	120/240	Single Phase Lighting & Power
	3	4 Delta	120/240	Combined Light & Power*
	3	4 Wye	208 Grd Y/120	Combined Light & Power
	3	4 Wye	480 Grd Y/277	Combined Light & Power**
	3	4 Delta	240/480	Combined Light & Power*

*Overhead Primary
**Underground Primary

Note: The Company follows the provisions of ANSI C84.1; latest revision, Electric Power Systems and Equipment – Voltage Ratings (60 Hertz)

302.2 Only one class of service voltage is provided to a single customer location.

302.3 Service at other voltages may be made available for approved loads upon special application to the Company. Supplying such service may require special construction and equipment by the customer and the Company. The details of such construction and equipment are subject to negotiation between the Company and the customer before service is supplied.

Date Filed: January 4, 2019

Effective Date: Service rendered on and after January 1, 2019

Issued By: Tamie A. Aberle
Director – Regulatory Affairs

Docket No.: 20004-128-EA-18



Montana-Dakota Utilities Co.

A Subsidiary of MDU Resources Group, Inc.

400 N 4th Street
Bismarck, ND 58501

State of Wyoming Electric Rate Schedule

W.P.S.C. Tariff No. 1
Original Sheet No. 125

CONDITIONS OF SERVICE Rate 100

Page 36 of 54

302.4 As the voltage and number of phases which will be supplied depend upon the character of the load, its size, and location, it is necessary that the customer consult with the Company regarding the type of service which will be furnished before proceeding with the purchase of equipment or the installation of wiring. (Refer to Paragraph 105)

302.5 The customer's wiring for single phase installations shall be such that the difference in loads on each side of the supply neutral shall not exceed 10% of the total load.

302.6 For three phase grounded wye installations, the load shall be balanced so that the difference in loads on the separate phases shall not exceed 10% of the total load.

303. Primary Voltages (See also Section 500.)

Service may be made available at primary voltage of 2400 volts or higher. The available primary voltage is dependent upon the local primary voltage.

Section 400 - SECONDARY VOLTAGE SERVICE (Under 600 Volts)

401. Secondary Voltage Service Connections

The location of the service connection is subject to approval by the Company. The Company will cooperate with the customer to the fullest extent practicable in determining such location. Once established, any change by the customer may result in billing to the customer for any additional work or materials required by the Company.

402. Service Connections and Disconnections

All connections or disconnections of overhead or underground services, regardless of the voltage, will be made by the Company at the point where the Company's facilities join those of the customer. No customer or agent of the customer will be authorized to make such connections or disconnections. (Refer to § III.1. and Paragraphs 103 and 104)

403. Number of Service Drops

In general, one service drop will be installed for each customer location. Exceptions will be made in special cases where it is mutually advantageous to the customer and the Company.

Date Filed: January 4, 2019

Effective Date: Service rendered on and after January 1, 2019

Issued By: Tamie A. Aberle
Director – Regulatory Affairs

Docket No.: 20004-128-EA-18



Montana-Dakota Utilities Co.

A Subsidiary of MDU Resources Group, Inc.

400 N 4th Street
Bismarck, ND 58501

State of Wyoming Electric Rate Schedule

W.P.S.C. Tariff No. 1
Original Sheet No. 126

CONDITIONS OF SERVICE Rate 100

Page 37 of 54

404. Services in Raceways

Where services are installed in raceways, the installations must comply with the requirements of the latest edition of the National Electrical Code. In addition, effective with services installed on and after April 25, 2006 metered conductors shall not be installed in the same raceway as unmetered service conductors.

405. Service Entrance Requirements

405.1 The Company recommends that the service entrance for single family residences be not less than 100 ampere. The service entrance shall be sized and installed in accordance with provisions of the National Electrical Code, state code, and local ordinances. Bare neutral wire shall not be installed in metallic conduit due to the possibility of radio interference.

405.2 Ample length of service entrance conductor shall be left protruding from the service head and at padmount equipment facilities to allow for proper connection to the service drop for overhead installations and to padmount equipment terminals.

405.3 When entrances are parallel in two or more conduits, all phases shall be run in each conduit and all wires shall be of the same length.

406. Identification of Conductors

406.1 For purposes of identification, the neutral wire of each single phase entrance shall be clearly marked at the service outlet as well as at the meter location.

406.2 Where 4-wire, three phase service entrances are installed, the neutral conductor and the "wild" phase conductor (nominal 208 volts to ground) shall each be clearly marked at the service outlet, at the meter and at service equipment.

407. Overhead Service Drops

407.1 The service entrance shall preferably be through the eave and be located so the overhead service drop will be as short as practical and maintain all clearance requirements. (Refer to Figure 1 and Paragraph 407.4)

407.2 In cases where proper clearances cannot be maintained by attaching the service drop directly to the building, the customer shall install and maintain a supporting

Date Filed: January 4, 2019

Effective Date: Service rendered on and
after January 1, 2019

Issued By: Tamie A. Aberle
Director – Regulatory Affairs

Docket No.: 20004-128-EA-18



Montana-Dakota Utilities Co.

A Subsidiary of MDU Resources Group, Inc.

400 N 4th Street
Bismarck, ND 58501

State of Wyoming Electric Rate Schedule

W.P.S.C. Tariff No. 1
Original Sheet No. 127

CONDITIONS OF SERVICE Rate 100

Page 38 of 54

structure of sufficient mechanical strength to support the wires and of sufficient height to provide the necessary clearances.

407.3 The customer shall furnish and install the necessary facilities for firmly mounting a Company supplied service drop attachment.

407.4 Service drop conductors shall not be readily accessible and when not in excess of 750 volts, shall conform to the following general requirements (Refer to the National Electrical Safety Code for possible exceptions) :

Clearance over roof – Multiplex service drop conductors shall have the following minimum clearance over a roof:

10.0 feet - from the highest point of roofs or balconies over which they pass with the following exceptions:

Exception 1: The clearance shall be maintained at not less than 3.0 feet above roof or balcony not readily accessible.

Exception 2: Where a roof or a balcony is not readily accessible, and a service drop passes over a roof to terminate as a (through-the-roof) raceway or approved support located not more than 4.0 feet, measured horizontally from the edge of the roof, the clearance above the roof shall be maintained at not less than 1.5 feet for a horizontal distance of 6.0 feet from the raceway or support, and shall be maintained at not less than 3.0 feet for the remainder of the horizontal distance that the cable or conductor passes over the roof.

Note: A roof or balcony is considered readily accessible to a person, on foot, who neither exerts extraordinary physical effort nor employs special tools or devices to gain entry.

Clearance from ground – Multiplex service drop conductors shall have the following minimum clearance from ground:

Date Filed: January 4, 2019

Effective Date: Service rendered on and after January 1, 2019

Issued By: Tamie A. Aberle
Director – Regulatory Affairs

Docket No.: 20004-128-EA-18



Montana-Dakota Utilities Co.

A Subsidiary of MDU Resources Group, Inc.

400 N 4th Street
Bismarck, ND 58501

State of Wyoming Electric Rate Schedule

W.P.S.C. Tariff No. 1
Original Sheet No. 128

CONDITIONS OF SERVICE Rate 100

Page 39 of 54

- 18.0 feet - over roads, streets and other areas subject to truck traffic. Trucks are defined as any vehicle exceeding 8 feet in height.
- 18.0 feet - over driveways, parking lots and alleys. This clearance may be reduced to the following values:
- (1) 17 feet – where multiplex service drops cross over or run along alleys, driveways, or parking lots.
 - (2) If the height of attachment to a building or other installations does not permit these requirements:
 - (a) 14 feet – over residential driveways for multiplex service drops limited to 150 volts to ground.
 - (b) 10 feet – over residential driveways for drip loops of service drops limited to 150 volts to ground.
- 14.0 feet - over spaces or ways accessible to pedestrians or restricted traffic only. This clearance may be reduced to the following values:
- (1) If the height of attachment to a building or other installations does not permit these requirements:
 - (a) 12 feet - for multiplex service drops limited to 150 volts to ground.
 - (b) 10 feet - for drip loops of service drops limited to 150 volts to ground.
- 24.5 feet - over swimming pools, or within 10 feet, measured horizontally, of the pool edge. In addition, there must be 16.5 feet clearance measured in any direction from every point on a diving platform or tower.

The vertical clearance is derived using the latest edition of the National Electrical Safety Code rule and, where necessary, adding 2 feet for vertical movement safety factor adopted by Company.

408. Secondary Voltage Underground Service

408.1 Where the customer desires an underground service, the customer must furnish and install conduit from the line side of the meter socket to a point a minimum of 18

Date Filed: January 4, 2019

Effective Date: Service rendered on and after January 1, 2019

Issued By: Tamie A. Aberle
Director – Regulatory Affairs

Docket No.: 20004-128-EA-18



Montana-Dakota Utilities Co.

A Subsidiary of MDU Resources Group, Inc.

400 N 4th Street
Bismarck, ND 58501

State of Wyoming Electric Rate Schedule

W.P.S.C. Tariff No. 1
Original Sheet No. 129

CONDITIONS OF SERVICE Rate 100

Page 40 of 54

inches below grade. (Refer to Figure 1.) The customer shall also provide necessary conduit for services under any asphalt or concrete drive-way, walkway, parking lot, or other areas where it is impractical to excavate.

408.2 If a customer requests to convert from an overhead service to an underground service, the customer must provide all necessary changes to the service entrance, including relocation, and the conduit described in 408.1 above. The customer must also provide a Company approved trench ready to accept the underground service conductors including back filling, surface restoration and any future settlement or erosion. If the customer requests the Company to provide this work, the Company will charge the customer for this service. In addition, if the service length is less than 150 feet, a fee equal to the Company's labor and equipment costs to convert the average 100 feet service line will be charged. If the service length is greater than 150 feet the customer will pay a fee equivalent to the Company's actual labor and equipment costs for the conversion.

409. Mobile Home Service

The customer shall install and maintain the metering pedestal or meter socket and meter mounting device. The customer, as the term is used in this section, is considered to be the mobile home court owner for installations in mobile home courts and the mobile home owner for installations on a private lot.

Section 500 - PRIMARY VOLTAGE SERVICE (2400 Volts or More)

501. General

The Company offers electric service at primary voltages of 2400 volts or higher. A customer desiring to take service at primary voltage shall furnish and own all electrical equipment from the point of delivery and shall consult the Company to assist in determining the size, type and arrangement of service entrance equipment and conductor specifications required for the customer's particular needs.

502. Service Entrance Equipment

The service entrance equipment shall perform the following functions:

- a. Isolate the load from the supply circuit by visible means.
- b. Automatically break the circuit in the event of overload.
- c. Permit manual opening of the circuit at full load.

Date Filed: January 4, 2019

Effective Date: Service rendered on and after January 1, 2019

Issued By: Tamie A. Aberle
Director – Regulatory Affairs

Docket No.: 20004-128-EA-18



Montana-Dakota Utilities Co.

A Subsidiary of MDU Resources Group, Inc.

400 N 4th Street
Bismarck, ND 58501

State of Wyoming Electric Rate Schedule

W.P.S.C. Tariff No. 1
Original Sheet No. 130

CONDITIONS OF SERVICE Rate 100

Page 41 of 54

503. Overcurrent Protection

The need for overcurrent protective coordination requires consultation with the Company. Overcurrent protective devices may be as follows:

- a. Fuses
- b. Automatic trip circuit breakers

The overcurrent protective device must have an interrupting rating, at circuit voltage, equal to or exceeding the maximum short circuit current available at the location where service is taken.

504. Disconnecting Means

504.1 The disconnect switch shall provide visible evidence that the circuit to which it is applied is open or disconnected. It shall be located on the supply side of the circuit.

504.2 Where fuses are used, the disconnect switch shall be a gang operated load break switch.

504.3 Where automatic circuit breakers are used as circuit protective equipment, the disconnect switch can be non-load break.

505. Load Balance

Loads on the three phases shall be balanced as closely as possible. The maximum unbalance permitted between individual phase loads is 10% of the total three phase load.

Section 600 - METERING

601. General

The Company will install the necessary meters to measure the electrical energy delivered under each account for a particular class of service. The Company shall install and maintain at its own expense all equipment necessary to regulate and measure the commodity delivered per tariff.

601.1 Meter Reading and Billing

- a. Each service meter shall clearly indicate the units of measurement. If the utility bills customers in a different unit of measurement than the service

Date Filed: January 4, 2019

Effective Date: Service rendered on and after January 1, 2019

Issued By: Tamie A. Aberle
Director – Regulatory Affairs

Docket No.: 20004-128-EA-18



Montana-Dakota Utilities Co.

A Subsidiary of MDU Resources Group, Inc.

400 N 4th Street
Bismarck, ND 58501

State of Wyoming Electric Rate Schedule

W.P.S.C. Tariff No. 1
Original Sheet No. 131

CONDITIONS OF SERVICE Rate 100

Page 42 of 54

meter indicates, the conversion factor shall be stated on the customer bill. In cases where special types of meters are used or where the readings of a meter must be multiplied by a constant to obtain the units consumed, that information shall be placed on the customer bill.

- b. Bills shall be rendered periodically and shall show the meter readings at the beginning and end of the billing period, the date of the meter readings, the units consumed, the class of service and other information necessary to enable the customer to readily re-compute the amount of the bill. Each bill shall bear upon its face the date of the bill and the latest date it may be paid without penalty. Estimated meter readings or budget billing shall be clearly identified on the bill. Electric meters shall be read monthly as nearly as possible on the same day within the billing cycle.

602. Meter Installations

602.1 The Company will furnish all meters required for billing purposes. It shall be the customer's responsibility to furnish, install and maintain the meter mounting device. Company approved specifications for electric meter sockets and metering transformer enclosures are listed below:

Self-Contained Meter Sockets - Single Phase, Three Phase and Multiple Position Type

1. The customer will utilize meter sockets from a Company approved list of manufacturer and models as posted on the company's website.
2. U.L. approved, ringless style.
3. 100 ampere minimum for overhead service installations. 200 ampere minimum for underground service installations.
4. Stud connectors are required for all socket rated 320 amps or greater.
5. For sockets rated below 230 amps, stud connectors are recommended. Only Company specified meter sockets are approved with lay-in connectors.
6. Equipped with a fifth terminal in the nine o'clock position where network metering is required.
7. A lever by-pass feature is required for all commercial and industrial installations. Upon review by Company, an exemption may be provided.

Date Filed: January 4, 2019

Effective Date: Service rendered on and after January 1, 2019

Issued By: Tamie A. Aberle
Director – Regulatory Affairs

Docket No.: 20004-128-EA-18



Montana-Dakota Utilities Co.

A Subsidiary of MDU Resources Group, Inc.

400 N 4th Street
Bismarck, ND 58501

State of Wyoming Electric Rate Schedule

W.P.S.C. Tariff No. 1
Original Sheet No. 132

CONDITIONS OF SERVICE Rate 100

Page 43 of 54

8. A lever by-pass feature is recommended for all residential installations.

Metering Transformer Rated Meter Socket

1. U.L. approved, ringless style with a one piece cover.
2. Minimum size must provide space for test switch installation.
3. Socket must have six terminals for single phase and 13 terminals for all other configurations.
4. Automatic by-pass feature is not acceptable.
5. The customer will utilize instrument rated meter sockets from a Company approved list of manufacturer and models.

Metering Transformer Enclosure (Secondary Service)

1. Recommend a durable, weather-resistant finish and weather-proof seal.
2. Must be provided with hinge-type cover and provisions to attach locking or sealing device.
3. Minimum size 10" x 24" x 30" with suitable mounting brackets for current and voltage transformers.
4. Consult with Company prior to purchasing any metering transformer enclosure.

602.2 Self-contained rate meter sockets shall be placed outdoors.

602.3 On instrument rated meter sockets, the Company will furnish and install the metering transformers. Such meter sockets shall be arranged for outdoor metering. (Refer to Figures 2 and 3)

602.4 Where a secondary metering transformer enclosure is required, the customer shall furnish and install an enclosure. Such enclosures shall contain only the service entrance conductors and metering transformers. The metering transformers shall be installed on the line side of the customer's disconnecting device. Suitable lugs, connectors, etc. for connecting metering transformers to service mains shall be provided by the customer. (Refer to Paragraph 602.1)

Date Filed: January 4, 2019

Effective Date: Service rendered on and after January 1, 2019

Issued By: Tamie A. Aberle
Director – Regulatory Affairs

Docket No.: 20004-128-EA-18



Montana-Dakota Utilities Co.

A Subsidiary of MDU Resources Group, Inc.

400 N 4th Street
Bismarck, ND 58501

State of Wyoming Electric Rate Schedule

W.P.S.C. Tariff No. 1
Original Sheet No. 133

CONDITIONS OF SERVICE Rate 100

Page 44 of 54

602.5 For installations having switchboards, the metering transformers may be mounted in the switchboard bus, provided they are accessible for changing and testing. Metering transformers shall be mounted on the source side of the main switch.

602.6 Meters and test switches may be mounted on a suitable unhinged panel adjacent to the metering transformer enclosure.

602.7 No device other than a Company-owned or Company-approved device shall be placed into the meter socket.

603. Meter-Switch-Fuse Wiring Sequence

For all secondary voltage metering installations, the meter entrance switch and main line fuse or breaker shall be installed in the order named with respect to power flow. All circuits downstream from the meter shall have proper overcurrent protection devices. A customer-owned main service switch shall be installed on the source side of all 480 volt, self-contained meters. This switch shall be located no closer than three feet either left or right of the meter socket, and the switch cover is sealed by the Company.

604. Meter Locations

604.1 Each meter shall be located outdoors in a place of convenient access where it will not create a hazard. The location shall be agreed upon by the customer's representative and the Company and in compliance with Chapter 3, Section 16 of the Wyoming Public Service Commission's Rules. (Refer to Figure 1)

604.2 Meters shall be located so that there is not less than 3 feet of unobstructed space, from the ground up, in front of the meter so that the center line of the meter is not less than 4 feet nor more than 5 feet above the floor, ground, or permanent platform from which the reading will be taken. On group installations, the minimum height is 2 feet – 6 inches and the maximum is 6 feet. The minimum center spacing between meter sockets shall be 7 ½ inches horizontally and 8 ½ inches vertically.

604.3 Meter Sockets shall be permanently mounted on secure structures such as houses, buildings, poles, etc. All required conduit will be provided by the customer. (Refer to Figures 1, 2 and 3)

604.4 Enclosures shall not be placed over the meter socket unless approved by the Company.

Date Filed: January 4, 2019

Effective Date: Service rendered on and after January 1, 2019

Issued By: Tamie A. Aberle
Director – Regulatory Affairs

Docket No.: 20004-128-EA-18



Montana-Dakota Utilities Co.

A Subsidiary of MDU Resources Group, Inc.

400 N 4th Street
Bismarck, ND 58501

State of Wyoming Electric Rate Schedule

W.P.S.C. Tariff No. 1
Original Sheet No. 134

CONDITIONS OF SERVICE Rate 100

Page 45 of 54

605. Indoor Metering

Meters shall be located outdoors as noted in Paragraph 604.1. However, depending on the circumstance and after consulting with the Company, locating the meters indoors may be approved on a case by case basis. Where approved, indoor meters for multiple dwellings, large office buildings, etc. shall be grouped and located as near the service entrance location as practicable. In the event such location renders the automatic meter reading equipment ineffective customer will be responsible for costs associated with remedying the situation.

606. Wiring Diagrams

Typical wiring diagrams for various types of self-contained meters are shown on Figure 4. These are subject to change from time to time with advancement in available metering equipment.

607. Labeling

Where two or more meter mounting devices are installed at one location, each shall be labeled so that it may be identified as to the customer served. Electrical contractors are requested and cautioned to check and identify wiring circuits carefully to avoid metering errors due to incorrect circuitry. Permanent (mechanically fastened) engraved plates shall be placed on the exterior of the meter base on a non-removable panel.

608. Seals

All meters and all points of access to customer wiring on the source side of the meter will be sealed by the Company. All cabinets and switch boxes, either inside or outside of the building, which contain unmetered wires shall have provisions made for sealing before service will be supplied.

Section 700 - UTILIZATION EQUIPMENT

701. Interfering Loads

Whenever a customer's utilization equipment has characteristics which cause undue interference with the Company's service to other customers, the customer shall provide, at the customer's expense, the necessary equipment to prevent or eliminate such interference. The Company may install and maintain at the customer's expense and upon approval of the customer the necessary equipment to eliminate such interference if it deems it advisable. When a customer's equipment or method of operation causes

Date Filed: January 4, 2019

Effective Date: Service rendered on and after January 1, 2019

Issued By: Tamie A. Aberle
Director – Regulatory Affairs

Docket No.: 20004-128-EA-18



Montana-Dakota Utilities Co.

A Subsidiary of MDU Resources Group, Inc.

400 N 4th Street
Bismarck, ND 58501

State of Wyoming Electric Rate Schedule

W.P.S.C. Tariff No. 1
Original Sheet No. 135

CONDITIONS OF SERVICE Rate 100

Page 46 of 54

such interference and the customer does not correct the condition after being so requested by the Company, the Company reserves the right to discontinue the electric service, following written notification of its intent to do so; and service will not be re-established until the conditions complained of have been corrected.

702. Voltage Flicker and Harmonics

702.1 The Company uses the latest revision of the IEEE Standard 141 as the guideline for the maximum allowable voltage flicker that can be caused by a customer's load as measured at the point of metering. This guideline refers to the momentary dip in voltage that may result from the customer's operation of switches, starting of motors, etc.

702.2 Customer's electric load shall comply with the recommendations within Section 10 of the latest revision of the IEEE Standard 519 "Recommended Practices & Requirements for Harmonic Control in Electric Power Systems" at the point of metering connection. The IEEE Standard is available for review by the customer by contacting the Company to discuss by phone or to arrange an appointment at the Company's Sheridan office.

703. Power Factor

Whenever the customer's utilization equipment is of such characteristics as to produce a low power factor, the Company reserves the right to require the customer to raise such power factor, at the customer's expense, or to pay additional charges as provided in certain of the Company's rates on file with the Regulatory Commission of the state wherein the customer is located.

704. X-Ray Equipment

At the option of the Company, x-ray equipment may be separately metered and/or supplied from separate transformers.

705. Electric Welders

Electric welding apparatus shall require special arrangements with the Company to determine its ability to serve before installation is made. (Refer to Paragraph 703)

706. Electric Motors

706.1 Motors are normally designed to operate at their rated voltage, plus or minus 10%; thus a 220 volt motor should operate satisfactorily at 208 volts or 240 volts.

Date Filed: January 4, 2019

Effective Date: Service rendered on and after January 1, 2019

Issued By: Tamie A. Aberle
Director – Regulatory Affairs

Docket No.: 20004-128-EA-18



Montana-Dakota Utilities Co.

A Subsidiary of MDU Resources Group, Inc.

400 N 4th Street
Bismarck, ND 58501

State of Wyoming Electric Rate Schedule

W.P.S.C. Tariff No. 1
Original Sheet No. 136

CONDITIONS OF SERVICE Rate 100

Page 47 of 54

706.2 To assure adequate safety to personnel and equipment, the customer shall provide and maintain protective devices in each phase to protect all motors against overloading, short circuits, ground faults and low voltage, and to protect all three-phase motors against single-phasing and phase reversal.

706.3 Motors for use at 120 volts single-phase are limited to locked rotor currents of 25 amperes if started more than 4 times per hour, and 50 amperes if started less frequently.

Motors for use at 208 or 240 volts single-phase will generally be limited to 3 h.p. and a maximum of 4 starts per hour. The Company must be consulted for single-phase motors above 3 h.p. Compensating starting equipment may be required to limit the starting current and when required, shall be furnished by the customer. (Refer to Paragraph 702)

706.4 The size of the three-phase motors permitted will depend upon the effect starting the motor has upon the customer's system and the Company's other customers in the area. This effect will depend upon the magnitude of the starting current and the frequency of starting. (Refer to Paragraph 702)

When necessary, the customer will be required to reduce the amount of starting current to an acceptable level by installing suitable motor-starting equipment or by using motors designed for smaller starting currents.

706.5 When more than one motor can start simultaneously, the sum of the maximum starting currents of those motors starting simultaneously and also the sum of their horsepower rating shall be furnished to the Company to determine when reduced voltage starting may be required.

707. Flashing Display Signs

The Company reserves the right to refuse service for "flashing" display signs or display lighting where such service would interfere with voltage regulation of the secondary system.

Date Filed: January 4, 2019

Effective Date: Service rendered on and
after January 1, 2019

Issued By: Tamie A. Aberle
Director – Regulatory Affairs

Docket No.: 20004-128-EA-18



Montana-Dakota Utilities Co.

A Subsidiary of MDU Resources Group, Inc.

400 N 4th Street
Bismarck, ND 58501

State of Wyoming Electric Rate Schedule

W.P.S.C. Tariff No. 1
Original Sheet No. 137

CONDITIONS OF SERVICE Rate 100

Page 48 of 54

708. Fluorescent and Gaseous Tube Lighting

High power factor ballasts or transformers must be used for fluorescent, sodium vapor, neon or other gaseous tube lighting equipment. It is required that such equipment operate at a power factor of not less than 90% lagging.

709. Electric Heat Equipment

A customer planning to install resistance type heating, heat pump, electric furnace, electrode boiler, etc. shall consult with the Company, before purchasing the equipment, so that operational modes of this equipment are determined to be acceptable for connection to the Company's distribution system. It is important that consultation is obtained prior to installation of this equipment so the Company can provide adequate capacity to efficiently serve the customer's requirements.

710. Computers and Electronic Equipment

Computers and other sensitive electronic equipment which require high grade, uninterrupted power may, on occasion, experience problems when connected directly to the Company's distribution system. The customer should contact their equipment supplier or consultant to ascertain the need for lightning arresters, surge suppressors, isolation transformers, and standby or uninterruptible power supplies. (Refer to § IV.2.)

711. Carrier Equipment

The customer shall not impose, or cause to be imposed, any electric signal of any frequency or magnitude upon the Company's distribution system that may produce ill effects on Company equipment, affect safety of personnel or affect other Customers' equipment.

Date Filed: January 4, 2019

Effective Date: Service rendered on and
after January 1, 2019

Issued By: Tamie A. Aberle
Director – Regulatory Affairs

Docket No.: 20004-128-EA-18



Montana-Dakota Utilities Co.

A Subsidiary of MDU Resources Group, Inc.

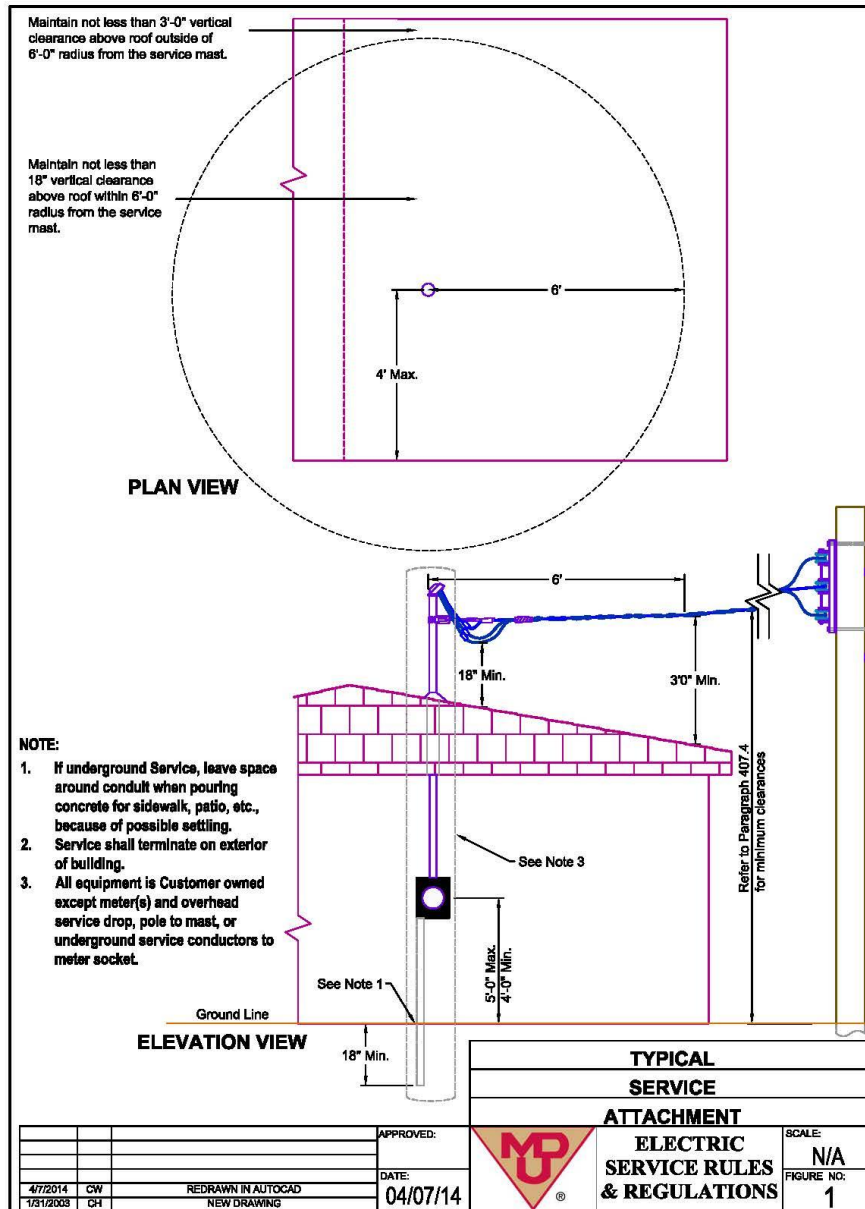
400 N 4th Street
Bismarck, ND 58501

State of Wyoming Electric Rate Schedule

W.P.S.C. Tariff No. 1
Original Sheet No. 138

CONDITIONS OF SERVICE Rate 100

Page 49 of 54



Date Filed: January 4, 2019

Effective Date: Service rendered on and after January 1, 2019

Issued By: Tamie A. Aberle
Director – Regulatory Affairs

Docket No.: 20004-128-EA-18



Montana-Dakota Utilities Co.

A Subsidiary of MDU Resources Group, Inc.

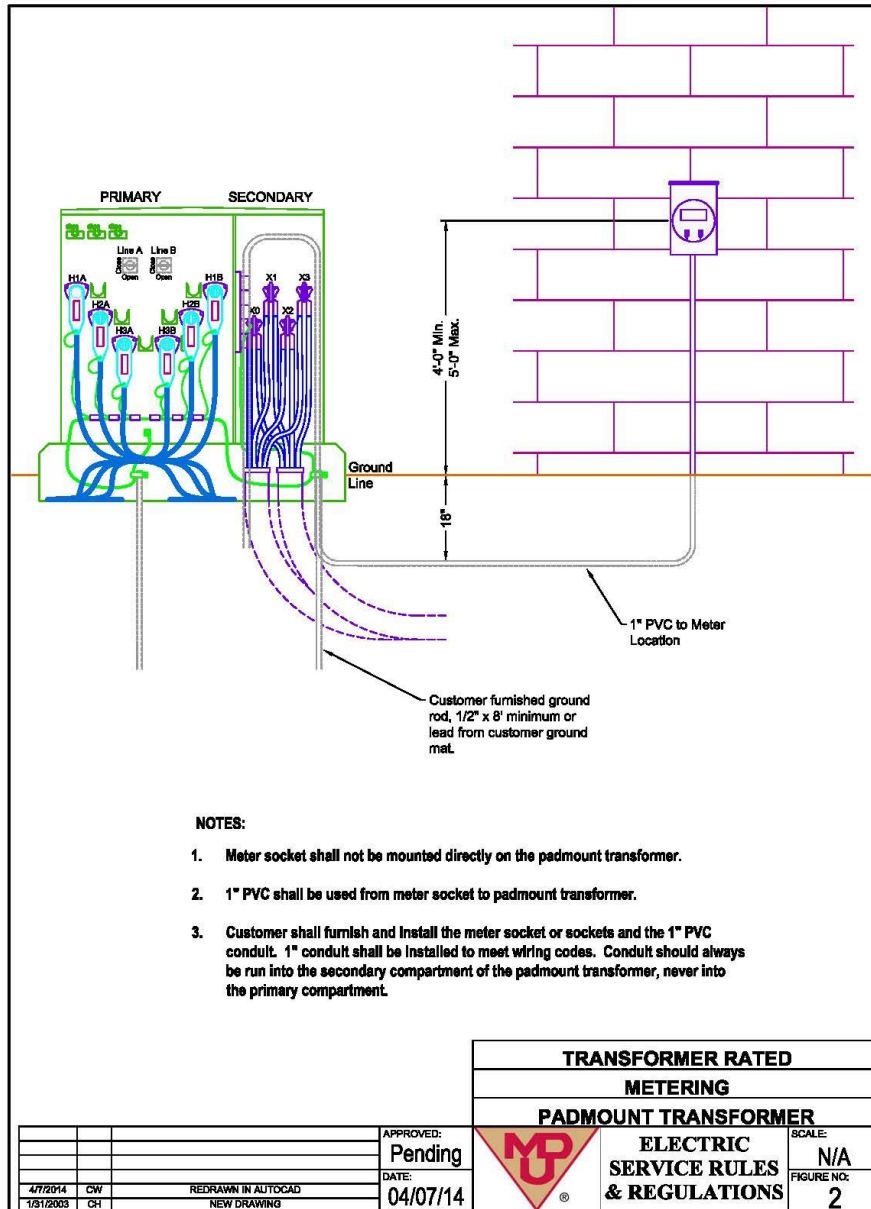
400 N 4th Street
Bismarck, ND 58501

State of Wyoming Electric Rate Schedule

W.P.S.C. Tariff No. 1
Original Sheet No. 139

CONDITIONS OF SERVICE Rate 100

Page 50 of 54



Date Filed: January 4, 2019

Effective Date: Service rendered on and after January 1, 2019

Issued By: Tamie A. Aberle
Director – Regulatory Affairs

Docket No.: 20004-128-EA-18



Montana-Dakota Utilities Co.

A Subsidiary of MDU Resources Group, Inc.

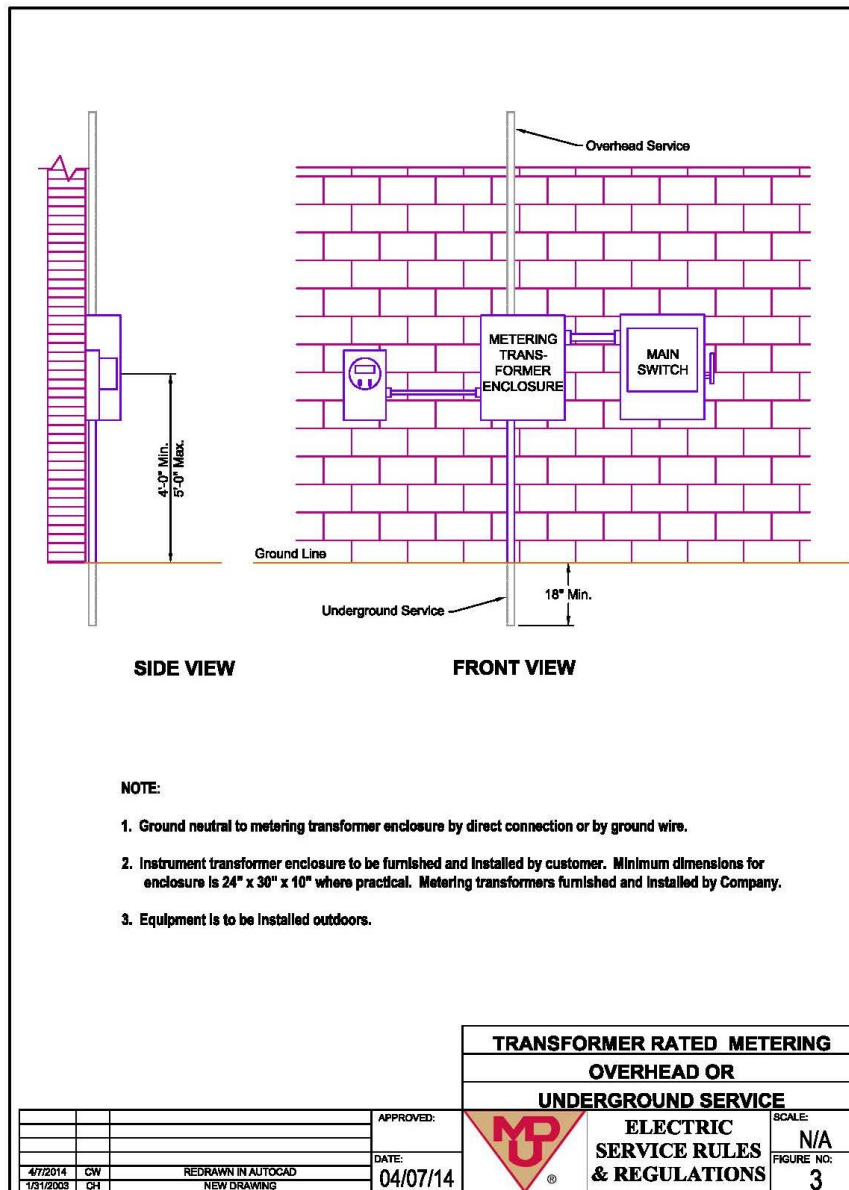
400 N 4th Street
Bismarck, ND 58501

State of Wyoming Electric Rate Schedule

W.P.S.C. Tariff No. 1
Original Sheet No. 140

CONDITIONS OF SERVICE Rate 100

Page 51 of 54



Date Filed: January 4, 2019

Effective Date: Service rendered on and after January 1, 2019

Issued By: Tamie A. Aberle
Director – Regulatory Affairs

Docket No.: 20004-128-EA-18



Montana-Dakota Utilities Co.

A Subsidiary of MDU Resources Group, Inc.

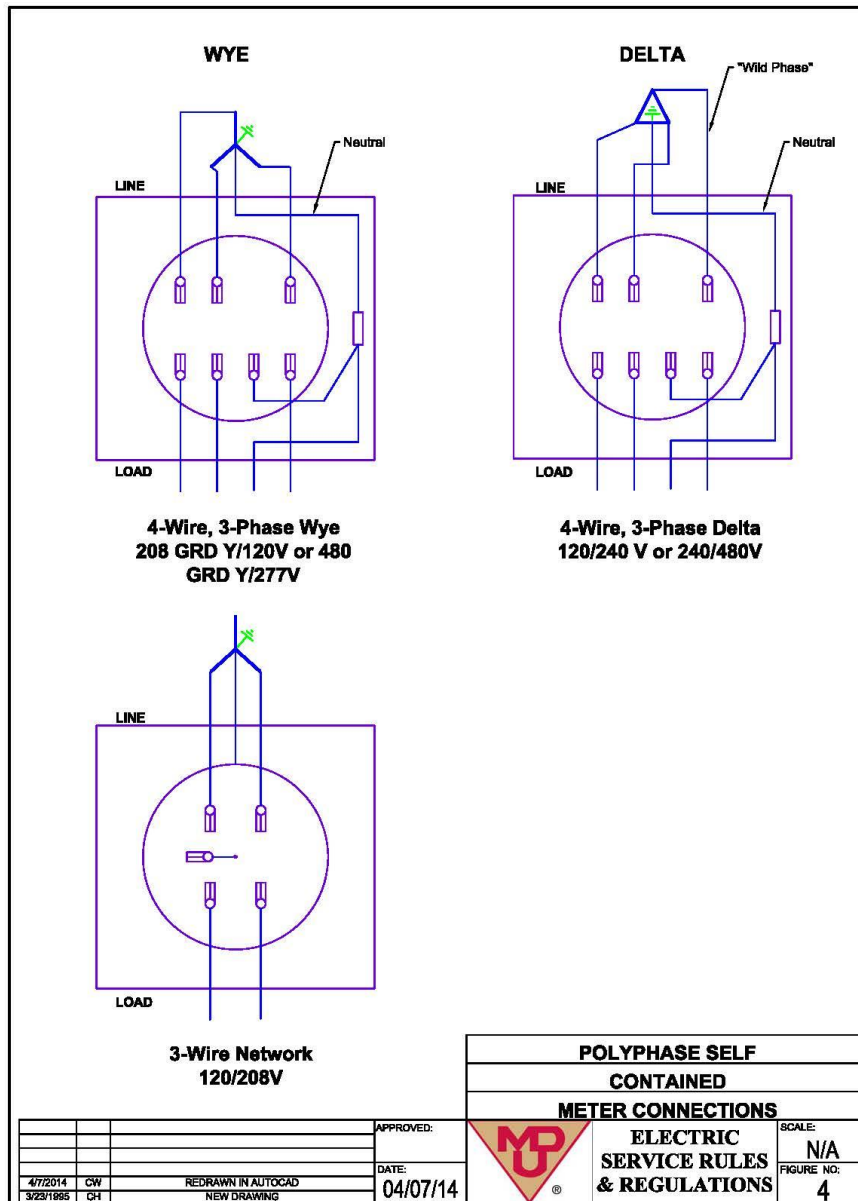
400 N 4th Street
Bismarck, ND 58501

State of Wyoming Electric Rate Schedule

W.P.S.C. Tariff No. 1
Original Sheet No. 141

CONDITIONS OF SERVICE Rate 100

Page 52 of 54



Date Filed: January 4, 2019

Effective Date: Service rendered on and after January 1, 2019

Issued By: Tamie A. Aberle
Director – Regulatory Affairs

Docket No.: 20004-128-EA-18



Montana-Dakota Utilities Co.

A Subsidiary of MDU Resources Group, Inc.

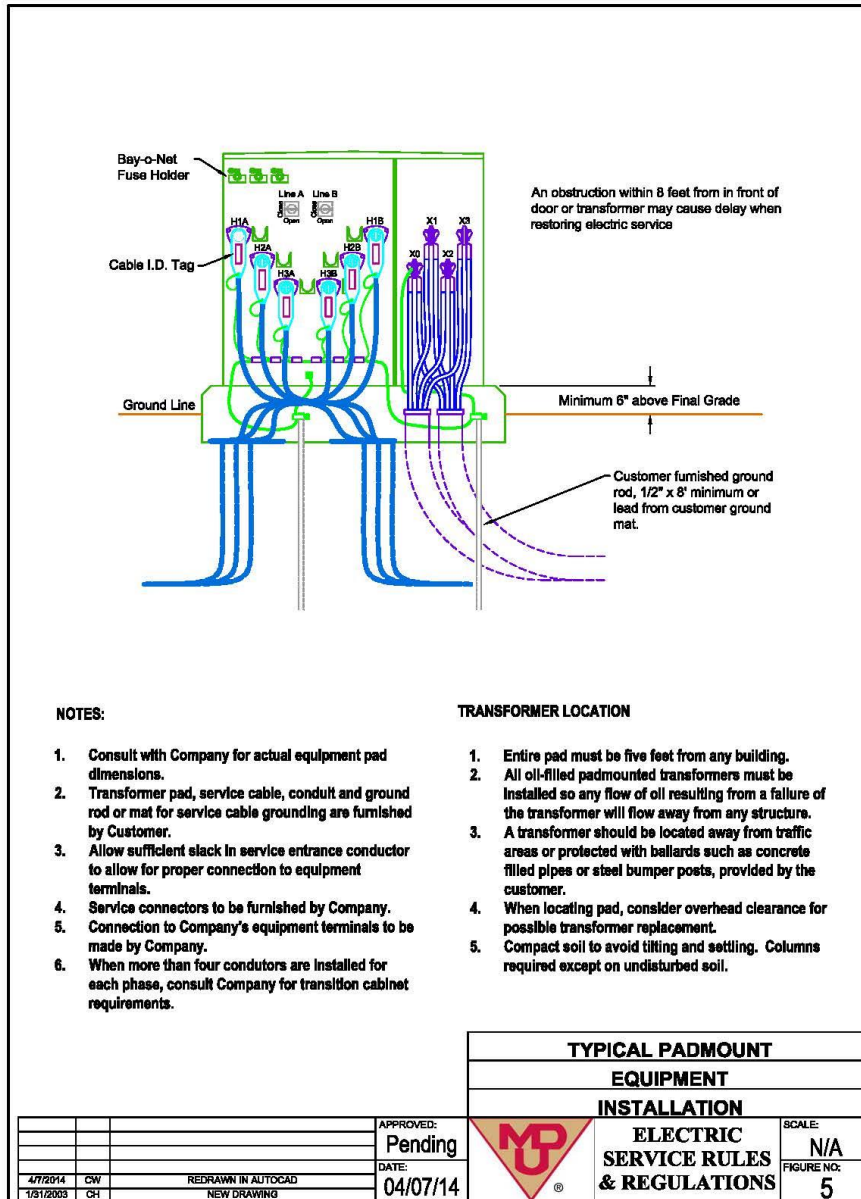
400 N 4th Street
Bismarck, ND 58501

State of Wyoming Electric Rate Schedule

W.P.S.C. Tariff No. 1
Original Sheet No. 142

CONDITIONS OF SERVICE Rate 100

Page 53 of 54



Date Filed: January 4, 2019

Effective Date: Service rendered on and after January 1, 2019

Issued By: Tamie A. Aberle
Director – Regulatory Affairs

Docket No.: 20004-128-EA-18



Montana-Dakota Utilities Co.

A Subsidiary of MDU Resources Group, Inc.

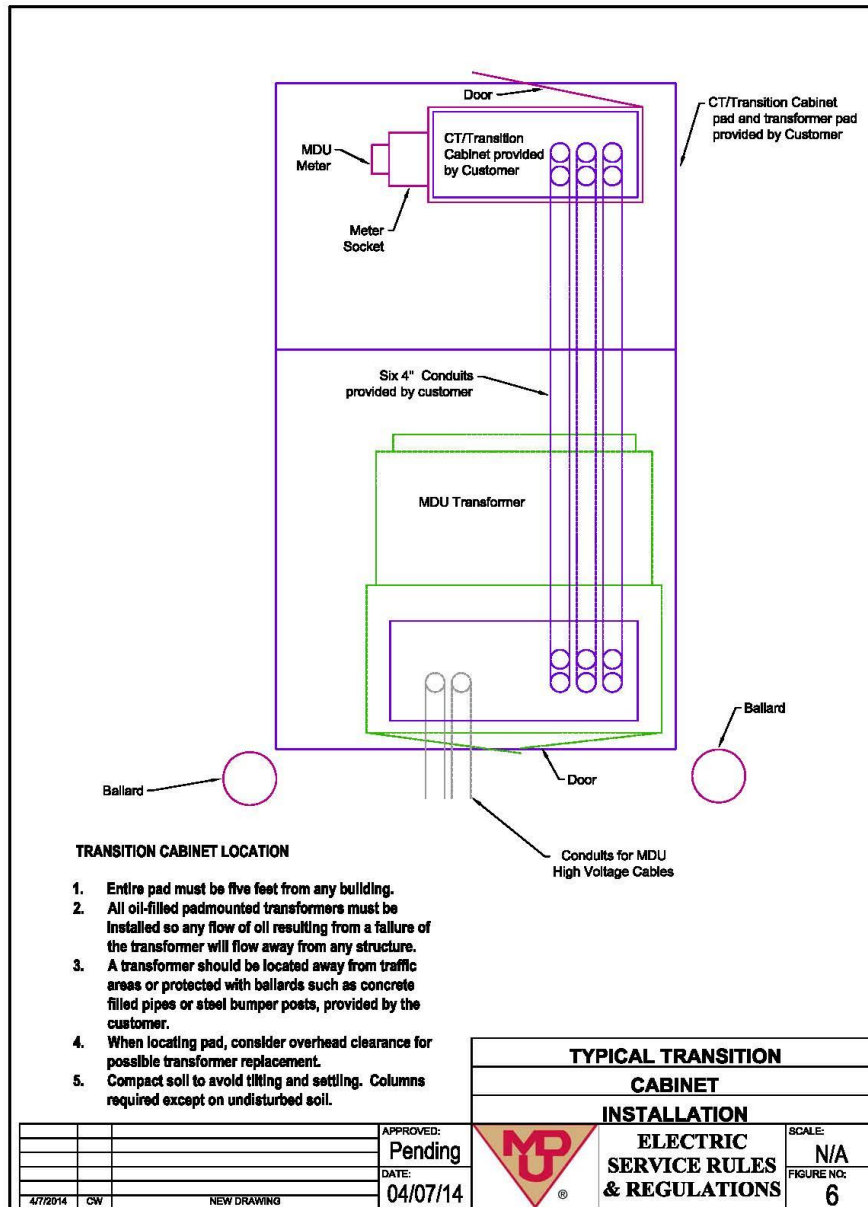
400 N 4th Street
Bismarck, ND 58501

State of Wyoming Electric Rate Schedule

W.P.S.C. Tariff No. 1
Original Sheet No. 143

CONDITIONS OF SERVICE Rate 100

Page 54 of 54



Date Filed: January 4, 2019

Effective Date: Service rendered on and after January 1, 2019

Issued By: Tamie A. Aberle
Director – Regulatory Affairs

Docket No.: 20004-128-EA-18