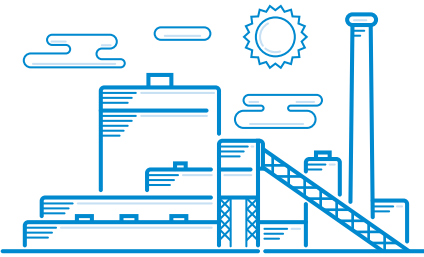


# MDU ELECTRIC GENERATION OVERVIEW



TOTAL 649 MW



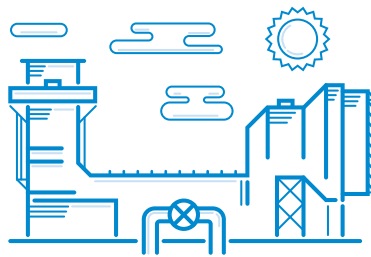
## COAL-FIRED GENERATION

37% | 242 MW

**Coyote Station** – Beulah, ND  
 • 107 MW of 427 MW plant (1981)

**Big Stone Station** – Big Stone City, SD  
 • 108 MW of 475 MW plant (1975)

**WyGen III** – Gillett, WY (Non-Miso)  
 • 27 MW of 110 MW (2010)



## NATURAL GAS-FIRED GENERATION

31% | 204 MW

**Heskett 3** – Mandan, ND  
 • 88 MW

**Glendive 2** – Glendive, MT  
 • 40 MW

**Glendive 1** – Glendive, MT  
 • 34 MW

**Miles City** – Miles City, MT  
 • 23 MW

**Lewis & Clark 2** – Sidney, MT  
 • 19 MW



## RENEWABLE GENERATION

32% | 210 MW

**Thunder Spirit Wind 1 & 2** – Hettinger, ND  
 • 155.5 MW

**Diamond Willow Wind** – Baker, MT  
 • 30 MW

**Cedar Hills Wind** – Rhome, ND  
 • 19.5 MW

**Glen Ullin Waste Heat** (from pipeline compressor) – Glen Ullin, ND  
 • 5.3 MW

**Other**  
 Portable Diesel Generation  
 • Two units – each 2 MW

MDU SUMMER PEAK **611.5 MW**

WINTER PEAK **582.1 MW**

# MISO OVERVIEW

MISO ensures the reliable delivery of electricity at the lowest cost across high-voltage power lines in 15 U.S. states and the Canadian province of Manitoba. Over the past eight years MDU has purchased 25 percent, on average, of its energy from the MISO market at an average price of 2.4¢/KwH.



## GENERATION CAPACITY:

**198,933 MW**

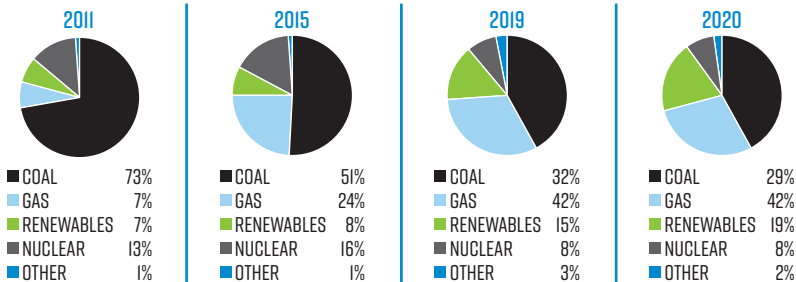
SUMMER PEAK:

**130,917 MW**

WINTER PEAK:

**117,903 MW**

## MISO ENERGY MIX 2011-2020



## MISO AREA OF SERVICE

