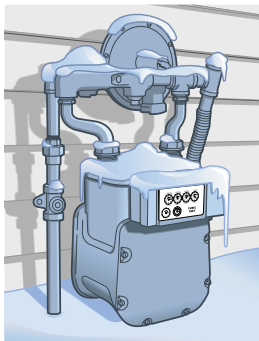


# PROTECT METERS FROM HARSH WINTER WEATHER

For Montana-Dakota Utilities customers' personal safety, inspection of residential natural gas meter(s) on a regular basis—and remove any ice and snow built up is encouraged. Keeping meter(s) clear of accumulation will help prevent damage that could result in a hazardous situation for your household.



## *Why is it important to keep a meter clear of snow and ice?*

- ▶ Accumulated snow could damage the meter and piping, causing gas to leak into your home, creating a hazardous situation.
- ▶ Excessive snow cover may result in abnormal pressure, affect appliance operation and interrupt your service.
- ▶ In case of an emergency, response crews need clear access to the meter.

## *Can snow and ice damage gas meters and pipes?*

Meters are designed to withstand winter weather conditions, but heavy or hard-packed snow and ice can cause damage. To avoid problems follow some basic meter protection tips:

- ▶ Keep the meter area and path to the meter clear of snow and ice.
- ▶ Use a broom to keep the snow cleared around and on top of the meter. Do not use a snow blower or shovel near the meter.
- ▶ NEVER kick or hit a meter to break away snow or ice.
- ▶ Remove icicles from overhead eaves and gutters to prevent dripping water on the meter.

**If your meter set appears to have damage, please call Montana-Dakota at 800-638-3278.**

01/2023



# SNOW REMOVAL SAFETY

**Montana-Dakota urges homeowners and contractors to be careful when removing snow and follow these safety steps:**

- ▶ Avoid pad-mounted transformers, meters, regulators and other types of equipment necessary for continuous electric and natural gas service. Damage to energized facilities can be dangerous and even fatal. The loss of services from a single accident can affect hundreds of homes and businesses.
- ▶ Be careful when piling snow beneath electric lines where children might reach them. Just a quick look up is all it takes to make sure it is safe.

**If you are removing snow in Montana-Dakota's service area and you are unsure of the location of energy delivery facilities, call 800-638-3278.**

Snow removal equipment operators need to be aware of objects buried under the snow, which can include natural gas meters and risers.

Accumulations of snow and ice can cause the regulator and meter to malfunction and result in a hazardous situation. A buried regulator may become clogged, affecting the supply of gas to the appliances. When melting occurs and the snow becomes wet and heavy, it can put pressure on the meter setting and cause strain on the associated piping. In extreme cases, it is possible that the piping could break.

**If your meter set appears to have damage, please call Montana-Dakota at 800-638-3278.**



**Know what's below.  
Call before you dig.**



## MONTANA-DAKOTA

UTILITIES CO.

*A Subsidiary of MDU Resources Group, Inc.*

***In the Community to Serve®***



[www.montana-dakota.com](http://www.montana-dakota.com)