

MDU ELECTRIC GENERATION OVERVIEW



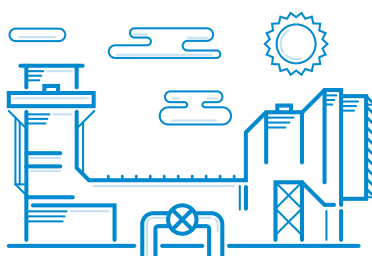
TOTAL 800 MW



COAL-FIRED GENERATION

48% | 386 MW

- Heskett 1&2** – Mandan, ND
 - 25 MW unit 1 (1954) / 75 MW unit 2 (1963)
- Lewis & Clark Station** – Sidney, MT
 - 44 MW (1958)
- Coyote Station** – Beulah, ND
 - 107 MW of 427 MW plant (1981)
- Big Stone Station** – Big Stone City, SD
 - 108 MW of 475 MW plant (1975)
- WyGen III** – Gillett, WY (Non-Miso)
 - 27 MW of 110 MW (2010)



NATURAL GAS-FIRED GENERATION

25% | 204 MW

- Heskett 3** – Mandan, ND
 - 88 MW
- Glendive 2** – Glendive, MT
 - 40 MW
- Glendive 1** – Glendive, MT
 - 34 MW
- Miles City** – Miles City, MT
 - 23 MW
- Lewis & Clark 2** – Sidney, MT
 - 19 MW



RENEWABLE GENERATION

27% | 210 MW

- Thunder Spirit Wind 1 & 2** – Hettinger, ND
 - 155.5 MW
- Diamond Willow Wind** – Baker, MT
 - 30 MW
- Cedar Hills Wind** – Rhame, ND
 - 19.5 MW
- Glen Ullin Waste Heat** (from pipeline compressor) – Glen Ullin, ND
 - 5.3 MW
- Other**
 - Portable Diesel Generation
 - Two units – each 2 mw

MDU SUMMER PEAK

611.5 MW

WINTER PEAK

582.1 MW

MISO OVERVIEW

MISO ensures the reliable delivery of electricity at the lowest cost across high-voltage power lines in 15 U.S. states and the Canadian province of Manitoba. Over the past eight years MDU has purchased 25 percent, on average, of its energy from the MISO market at an average price of 2.5¢/KwH.



GENERATION CAPACITY:

191,062 MW

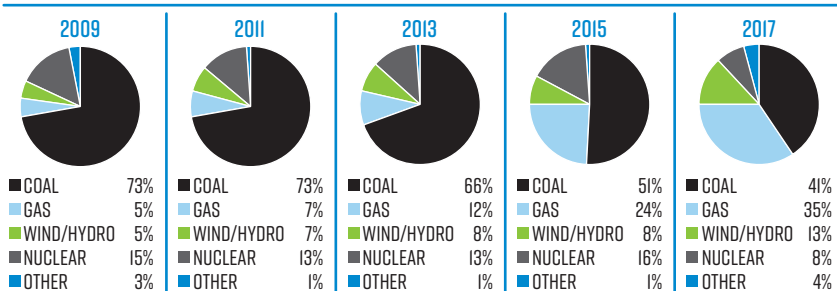
SUMMER PEAK:

130,917 MW

WINTER PEAK:

117,903 MW

MISO ENERGY MIX 2009-2017



MISO AREA OF SERVICE

